

# *CAPTEM*

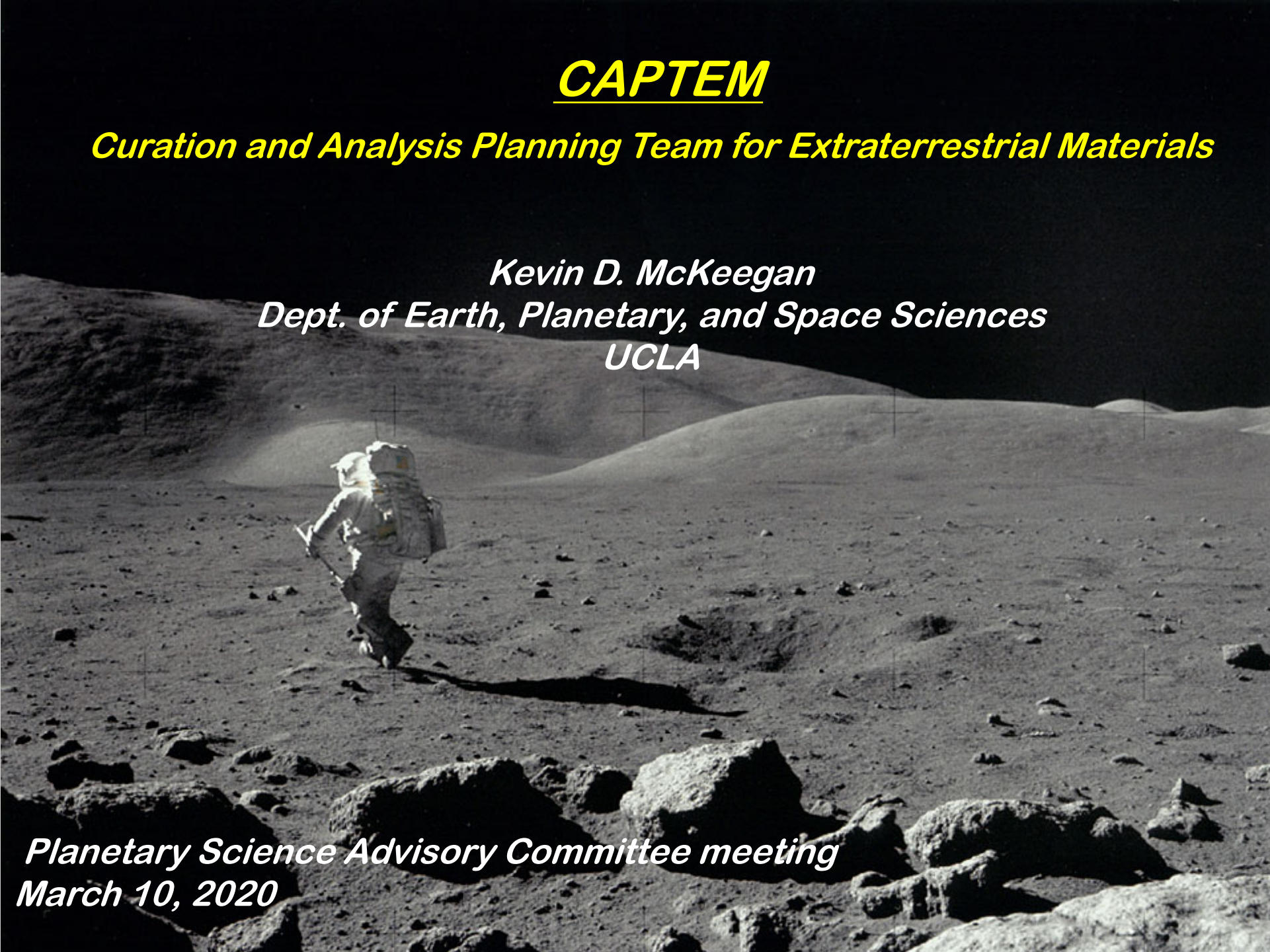
*Curation and Analysis Planning Team for Extraterrestrial Materials*

*Kevin D. McKeegan*

*Dept. of Earth, Planetary, and Space Sciences*

*UCLA*

*Planetary Science Advisory Committee meeting  
March 10, 2020*



# *CAPTEM*

- a community-based, interdisciplinary forum for discussion and analysis of matters concerning the collection and curation of extraterrestrial samples, including planning for future sample return missions.
- a standing review panel, charged with evaluating proposals requesting allocation of all extraterrestrial samples contained in NASA collections.
- allocation sub-committees are each responsible for one or more of NASA collections of ET samples.
- In its role as an analysis group, CAPTEM may also organize ad hoc or standing subcommittees to address specific issues. In principle, this includes supporting human exploration objectives and their implications for architecture planning and activity prioritization for future exploration of planetary surfaces.

# CAPTEM 2020

- Chair: Kevin McKeegan (UCLA), Vice-chair: Hope Ishii (UH)
- Secretary: Liz Rampe (JSC)      \*Chair-elect (2021): Barbara Cohen (GSFC)

## Sub-committee chairs

- Lunar: Juliane Gross (Rutgers U)
- Genesis: Larry Nittler (CIW)
- Stardust: Rhonda Stroud (NRL)
- Asteroids: Munir Humayun (FSU)
- Cosmic Dust: Hope Ishii (UH)
- Informatics: Sam Lawrence (JSC)
- Meteorite Working Group: Noriko Kita (U Wisconsin)
- Mars: Justin Filiberto (LPI), Caroline Smith (Nat Hist Mus, London)

## at-large members

- Jessica Barnes (UA), Jemma Davidson (ASU), Lydia Hallis\* (U Glasgow)

## coordinators

- Facilities: Kevin McKeegan (UCLA)
- Space Exposed Hardware: Jeff Taylor (UH)      \* new member

## recent CAPTEM activities

- No meetings held since the December PAC meeting
  - was to have met in person with ARES/curatorial staff immediately following LPSC; meeting will now be virtual (Wed. 3/18).
  - Updates from subcommittees will follow from this meeting
- Planning CAPTEM WP contributions toward Decadal
  - was to have held community forum @LPSC; no alternative plan developed yet
  - looking for another meeting opportunity prior to summer

# ongoing CAPTEM issues for PAC

## Extraterrestrial Materials Curation

- CAPTEM will continue to anticipate working with NASA HQ on developing an investment strategy for needed future analytical capabilities and facilities.
  - CAPTEM would appreciate a discussion of emerging plans for Facilities support as part of NASA's response to NAS report
- New NASA policies on curation of Astromaterials?

## Decadal Survey

- How is the Survey committee chosen? Given the importance of ongoing and planned sample return missions in the next ~dozen years, will there be representation from the sample science community on the committee?