

# Planetary Science R&A Program Update

Jonathan Rall

Planetary Science Subcommittee Meeting

07 June 2016

# PSD R&A ROSES 16 Deadlines

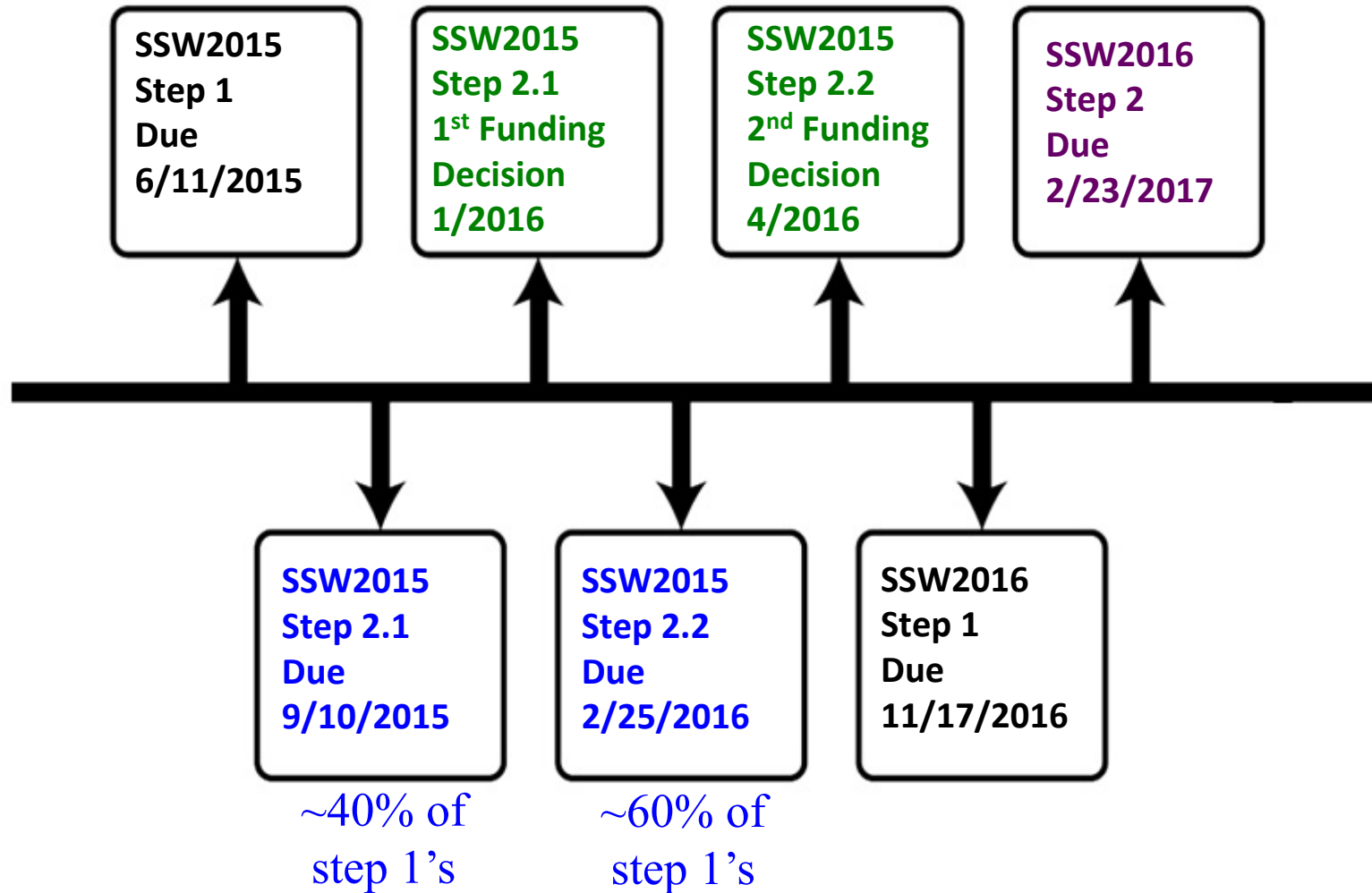
Program Name	Step-1 Due Date	Step-2 Due Date
Exoplanets (XRP)	<b>03/29/2016</b>	<b>05/26/2016</b>
Emerging Worlds (EW)	<b>03/31/2016</b>	<b>06/03/2016</b>
Cassini Data Analysis (CDAPS)	<b>04/06/2016</b>	06/16/2016
Solar System Obs. (SSO)	<b>04/08/2016</b>	06/10/2016
MatISSE	<b>04/21/2016</b>	06/21/2016
Laboratory Analysis of Returned Sample (LARS)	<b>04/22/2016</b>	06/24/2016
Planetary Data Archiving, Resto, Tools (PDART)	<b>05/13/2016</b>	07/15/2016
Exobiology (EXOB)	<b>05/20/2016</b>	07/22/2016
Planetary Protection Research (PPR)	06/24/2016	09/02/2016
Planetary Sci./Tech. Through Analog Research (PSTAR)	07/22/2016	09/23/2016
Mars Data Analysis (MDAP)	08/26/2016	09/30/2016
Lunar Data Analysis (LDAP)	09/30/2016	10/28/2016
PICASSO	09/14/2016	11/14/2016
Discovery Data Analysis (DDAP)	09/08/2016	11/17/2016
Habitable Worlds (HW)	11/18/2016	01/20/2017
Solar System Workings (SSW)	11/17/2016	02/23/2017

## Timeline for SSW 15 & 16

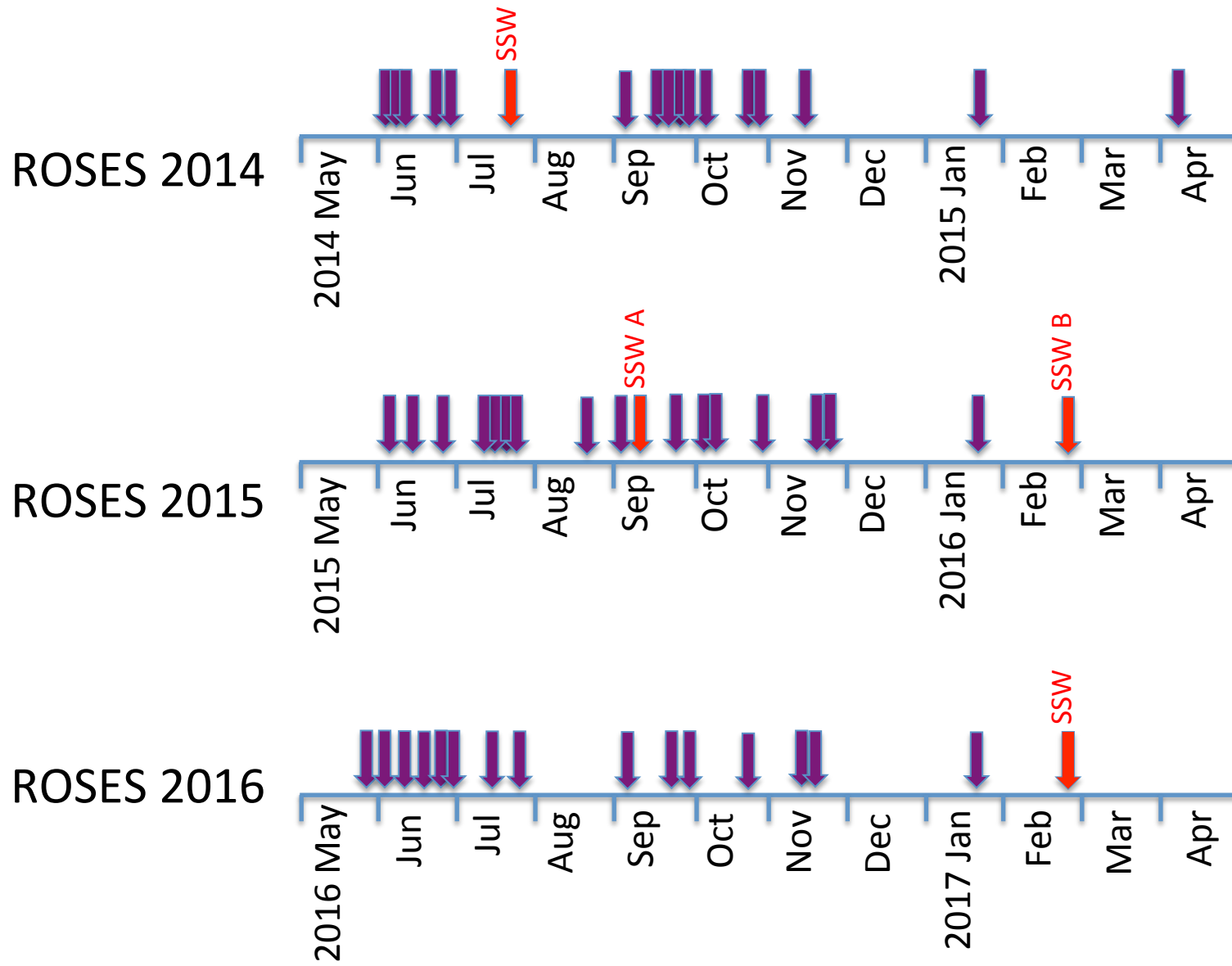
Single Step 1 per year

Two Step 2 deadlines for SSW 2015

One Step 2 deadline for SSW 2016+



# Calendar Crunch: ROSES Step-2 Deadlines

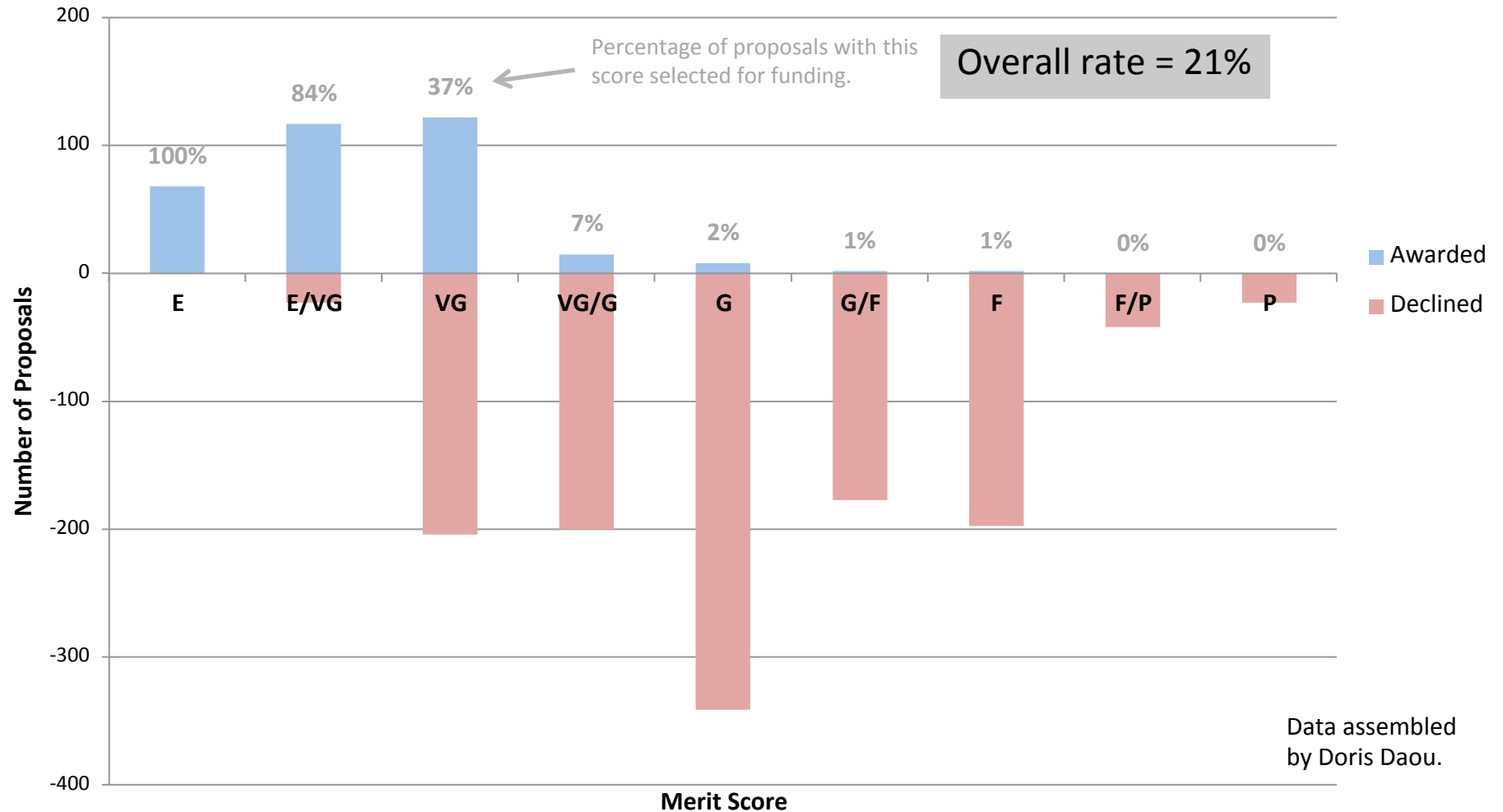


# Change in Proposal Numbers

Program	ROSES 2014 Step-2 Submissions	ROSES 2015 Step-2 Submissions	% Change
EW	158	137	-13
SSW	384	315	-18
EXOB	144	179	+24
SSO	71	51*	-28
PDART	100	97	-3
CDAPS	78	84	+8
DDAP	27	39	+44
LARS	24	18	-25
XRP	134	112	-16
MDAP	104	100	-4
LDAP	51	47	-8
PSTAR	46	48	+4
HW	72	63	-13
MatISSE	44	Not solicited	
PICASSO	96	113	+18
Total	1533	1403	-15

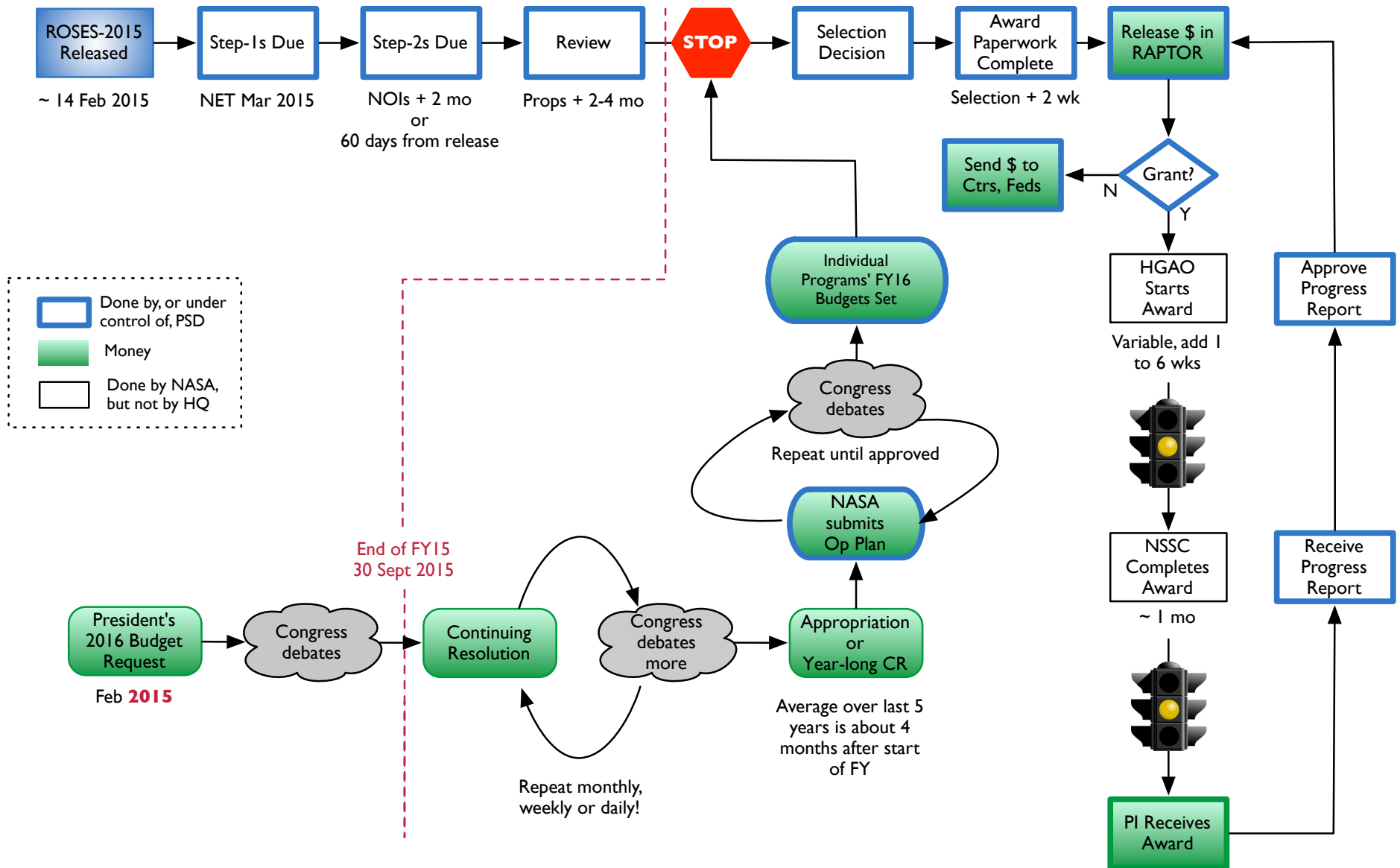
\*NEOO proposals not solicited in 2015.

# A Selection Metric

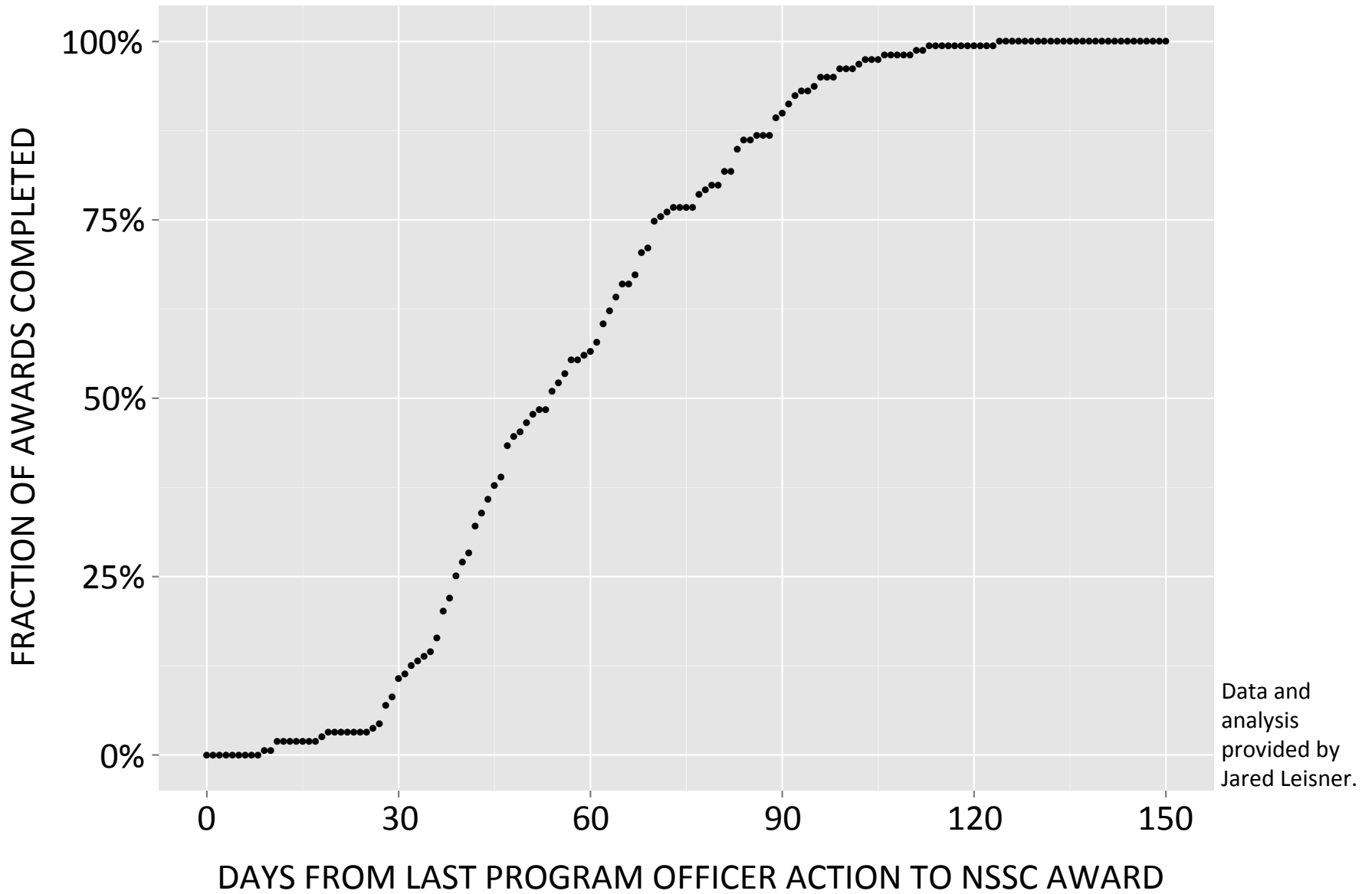


Shown are proposals submitted to ROSES-2014, including all core programs (EW, SSW, HW, SSO, EXO) and all DAPs (MDAP, DDAP, LDAP, CDAPS).

# Where's my money?



# The speed of money





# Facilities

## Objective

Ensure that NASA-funded, science-enabling research facilities support the needs of PSD R&A community

## Current PSD Funded Facilities

Summarize *Lessons Learned* from [PSD-Funded Facilities](#)

## Community Needs Assessment

- *Assess Community Needs* through [RFI](#)
- *Identify Existing Facilities* via [LPSC session](#)  
(PSD funded or not)

## Future Plans for Support of Facilities

- Release a CAN to fund facilities that would answer the needs of the community
- Estimated release date in calendar year 2016

# FY16 Research Budget by Funding Line

Program	Budget (\$M)
Planetary R&A (Competed and supported activities)	154.0
Mars R&A (Mars Data Analysis Program) (excluding Critical Data Products (CDP))	9.4
Outer Planets Research (Cassini Data Analysis Program & PSP)	8.4
Discovery Research	11.4
Joint Robotics Program for Exploration (JRPE) (SSERVI Nodes)	10.0
NEOO (Competed activities)	20.9
Oceans Worlds Technology	25.0
<b>Total</b>	<b>239.1</b>

# National Academies R&A Study

Objective: Examine the program elements of the PSD R&A programs, as they currently exist following restructuring, for their consistency with past NRC advice

The committee\* will address the following questions:

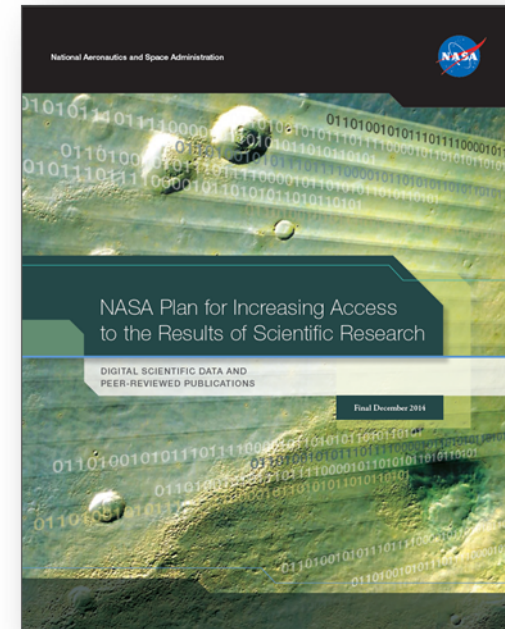
1. Are the PSD and R&A program elements appropriately linked to, and do they encompass the range and scope of activities needed to support, the NASA Strategic Objective for Planetary Science and the PSD Science Goals, as articulated in the 2014 NASA Science Plan?
2. Are the PSD R&A program elements appropriately structured to develop the broad base of knowledge and broad range of activities needed both to enable new spaceflight missions and to interpret and maximize the scientific return from existing missions?

\* *Ad hoc* committee selected, study in session. Report anticipated by December.



## NASA's Progress in Increasing Access to Scientific Research

- In response to the OSTP Memo from February 2013 which directs each Federal agency with over \$100 million in annual conduct of research and development expenditures to develop a plan to support increased public access to the results of research funded by the Federal Government.
- NASA Policy Directive NPD 2230, Research Data and Publication Access is final
- A website portal for all of NASA data information is located at [www.nasa.gov/open/researchaccess](http://www.nasa.gov/open/researchaccess). It will include the plan/NPD, FAQs, links to training videos as well as links to NASA datasets.
- NASA's repository for all peer reviewed publications is located at NASA portal page entitled PubSpace



*“Effective data management has the potential to increase the pace of scientific discovery and promote more efficient and effective use of government funding and resources.”*

NASA Data Access Strategy  
[www.nasa.gov](http://www.nasa.gov) (Excerpt from the NASA Plan)



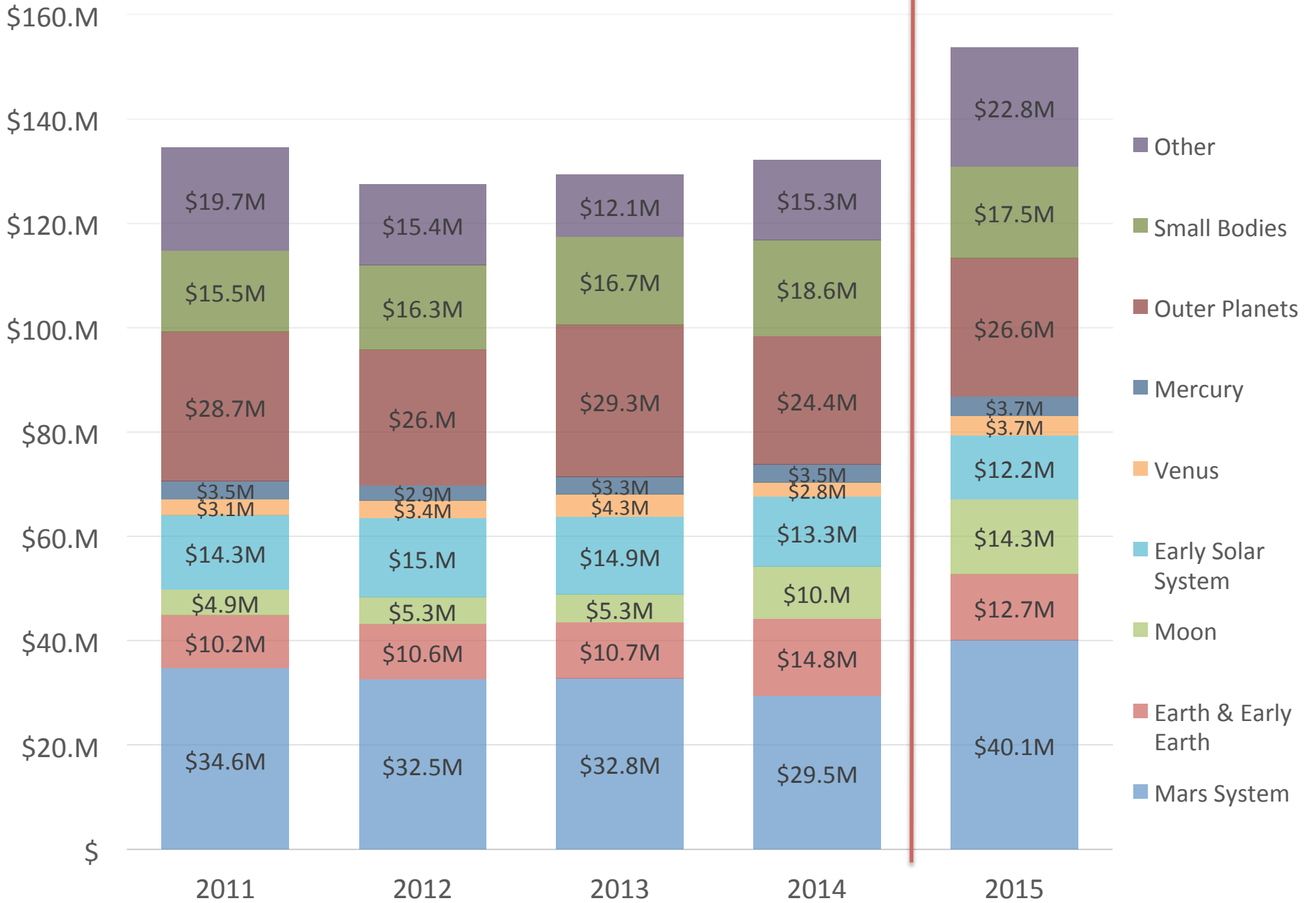
## Data and Publication Management Status

- NASA's research solicitations will require a data management plan (DMP)
  - Will be required in all 2016 solicitations
  - DMP will not be counted in the overall proposal page count
  - DMP must be included in the proposal and identify where the data will be housed
- Extramural = Grantees and contractors to submit accepted peer reviewed manuscripts to Pubspace.
- Intramural = Civil servants accepted peer reviewed manuscripts to be submitted into STI Program and STI will upload into Pubspace

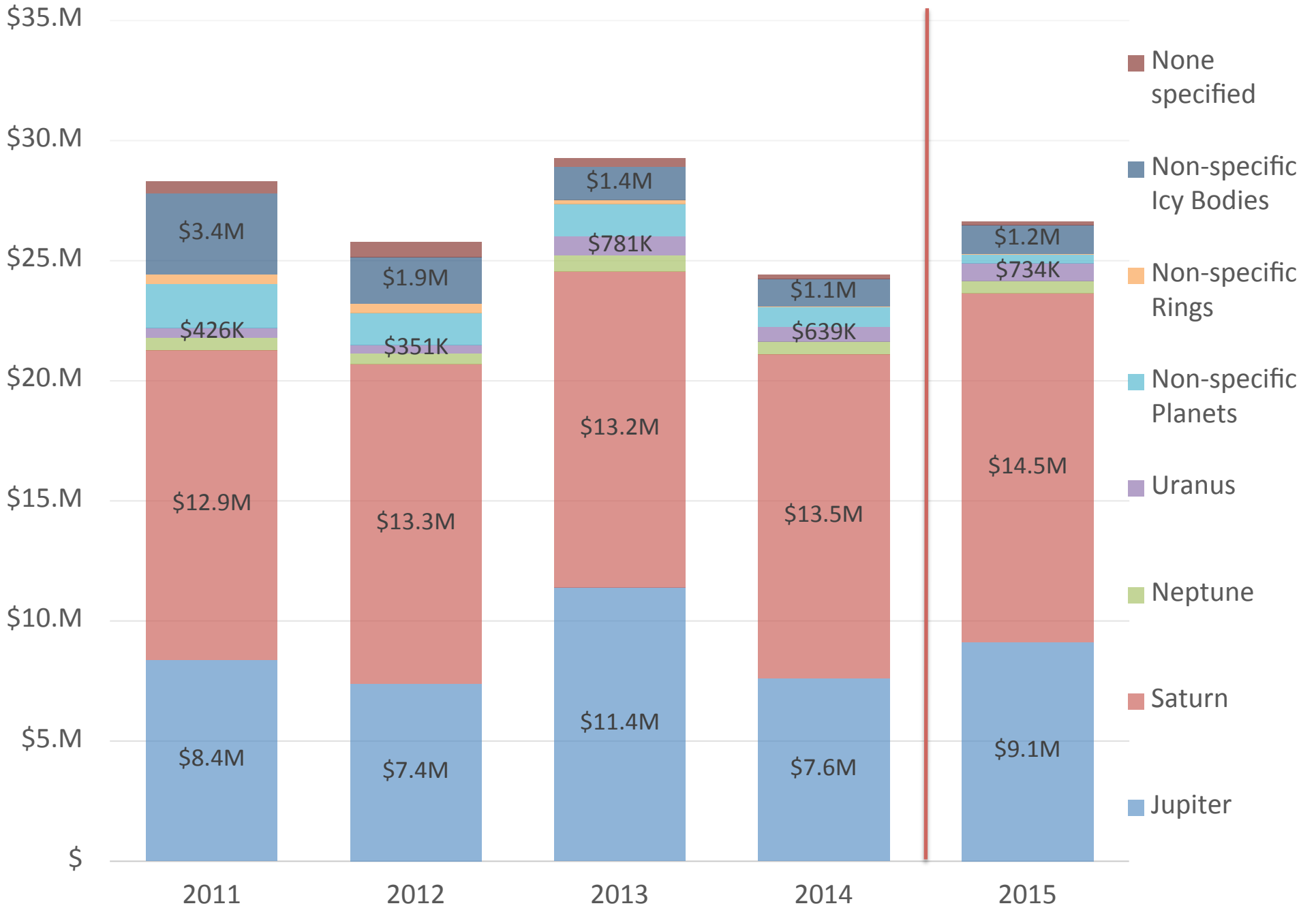
# Keyword Analysis

- Analysis of “Target Object” Keyword for 2011-2015:
  - Competed ROSES programs
- Excludes:
  - NAI
  - SSERVI
- Caveats:
  - Keywords were not submitted for all tasks

## TARGET OBJECT (BY FY)

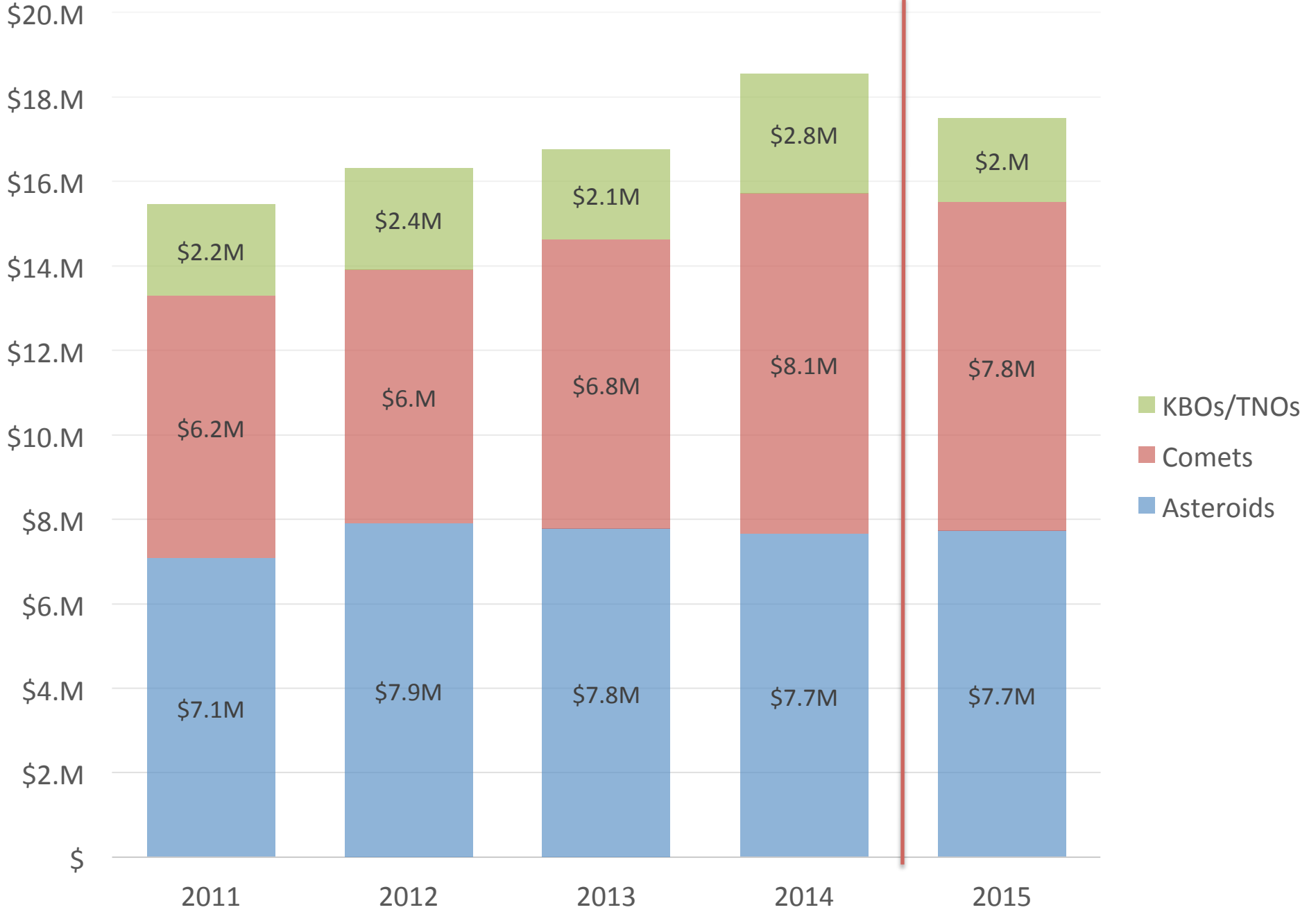


# OUTER PLANETS (BY FY)

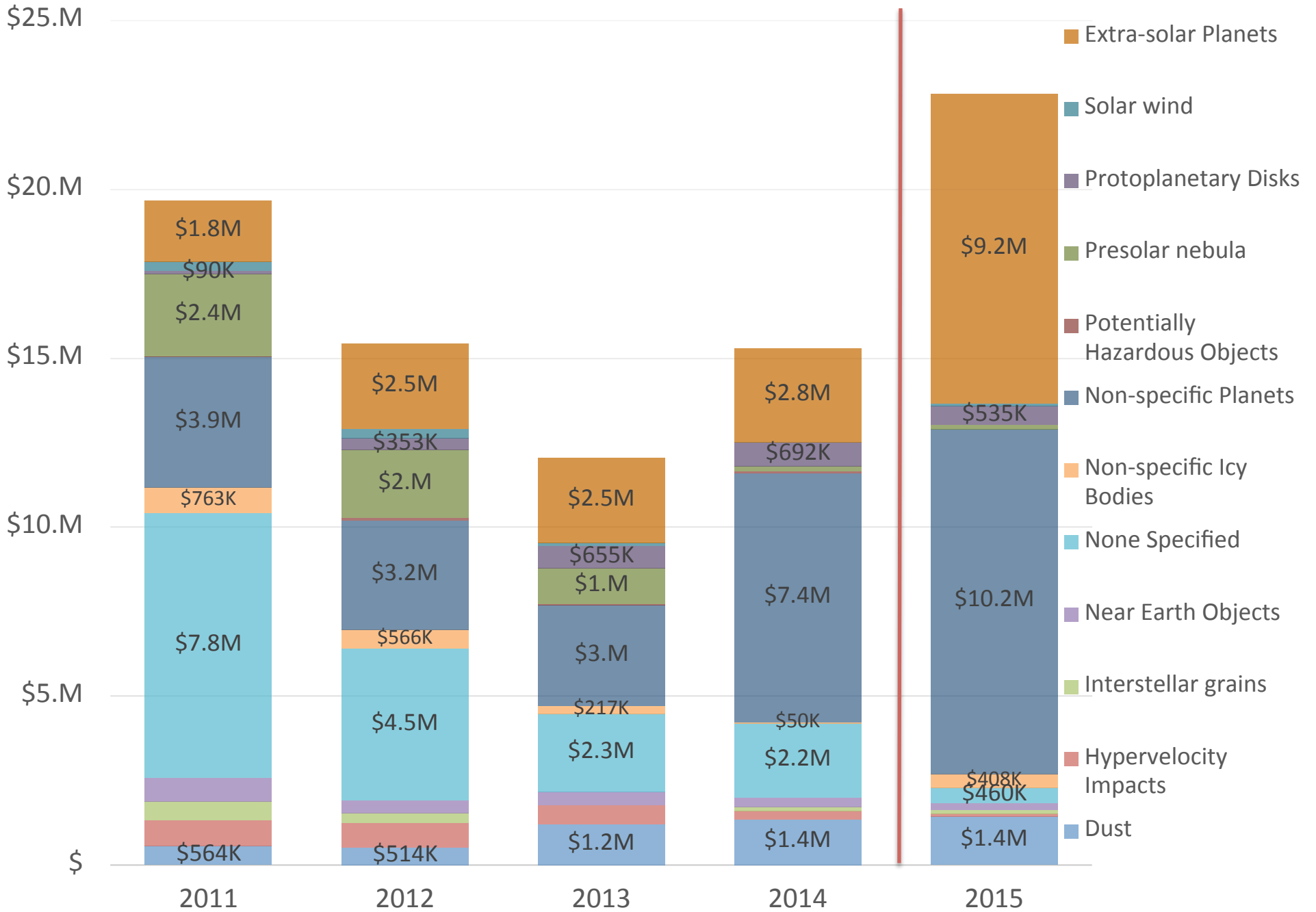




## SMALL BODIES (BY FY)



# OTHER BODIES (BY FY)



**QUESTIONS?**

# **BACKUPS**

# Important Change in ROSES-2016

- We must hide NASA Civil Servant (CS) salary and overhead from ROSES peer reviewers, but we currently do not hide salary and overhead of non-NASA proposers.
- Since we keep the NASA CS salary out the budgets and the cover pages, they sometimes get forgotten.
- Starting in ROSES-2016 we will treat all proposers equally: All salaries and overhead will be included in the NSPIRES cover pages, but automatically hidden from reviewers.
- Only level of effort (FTEs/WYEs) will be in the body of proposals and assessed by peer reviewers.
- Because all salaries and overhead for everyone will be in the cover pages, NASA HQ will be less likely to miss these when awarding to Centers.

# Procedure for USGS mapping

- Contact the USGS Map Coordinator (currently Jim Skinner) to discuss the mapping project. This should be done as early as possible in the proposal process.
  - The USGS has a form letter that lists the map's technical specifications and affirms that the USGS is able to support the mapping effort.
  - This is purely a statement of technical support and does not constitute an endorsement of the proposal.
- In the proposal submission questions, indicate that a USGS geologic map would be published as part of the project.
- In the full (Step-2) proposal, the USGS letter of technical specifications must be included, as one would include a letter of support.
  - This letter does not remove the responsibility of the proposal to describe and justify the mapping effort within the 15-page main body.
  - Selection of a proposal is contingent upon the inclusion of this letter.
- The USGS will be notified by the Program Officer of selected proposals with a mapping component.

## ...and there's leveraging!

- Astrophysics Division provides ~\$1.5M to the NASA Astrobiology Institute.
- Astrophysics Division and R&A leverage joint investments in XRP: ~\$6M/year in research with \$2-2.5M for new awards.
- Human Exploration and Operations Mission Directorate (HEOMD) contributes \$4-5M to fund SSERVI.

# Updates

- Feb: ROSES 2016 released
  - IMPORTANT CHANGE: All salaries (even civil servants!) should be included in cover page budget tables; these will be automatically redacted and hidden from reviewers. DO include the work effort table (FTEs); Do NOT include \$ values of salaries (or overhead) in the budget justification.
  - Appendix C.1 explains general requirements that apply to all program elements; read it carefully!
  - Two-page DMP falls outside 15-page limit.
  - There is a new PSD-specific FAQ page for Data Management Plans.
- May 2016: Office of Chief Scientist release Data Management website
- Later in 2016: Facilities RFIs and CAN
- Late 2016:
  - Mid decadal review start
  - New Frontiers DraB AO