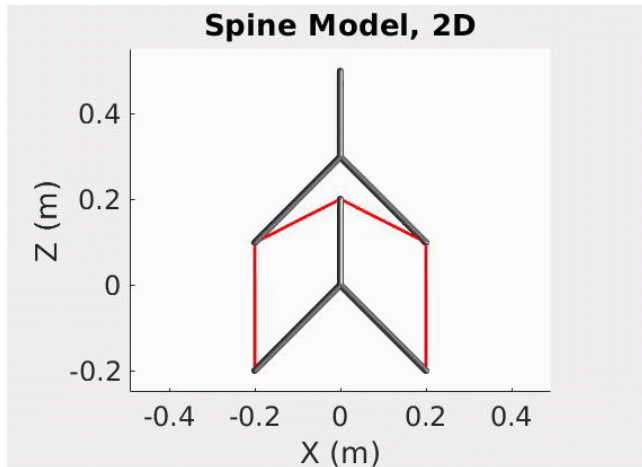
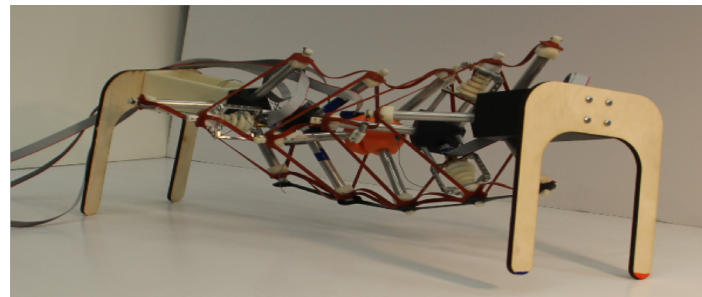
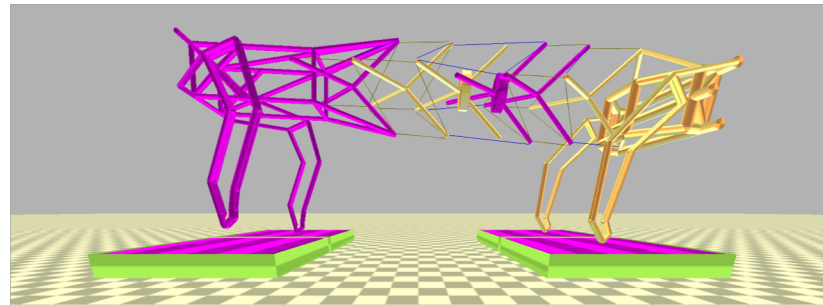
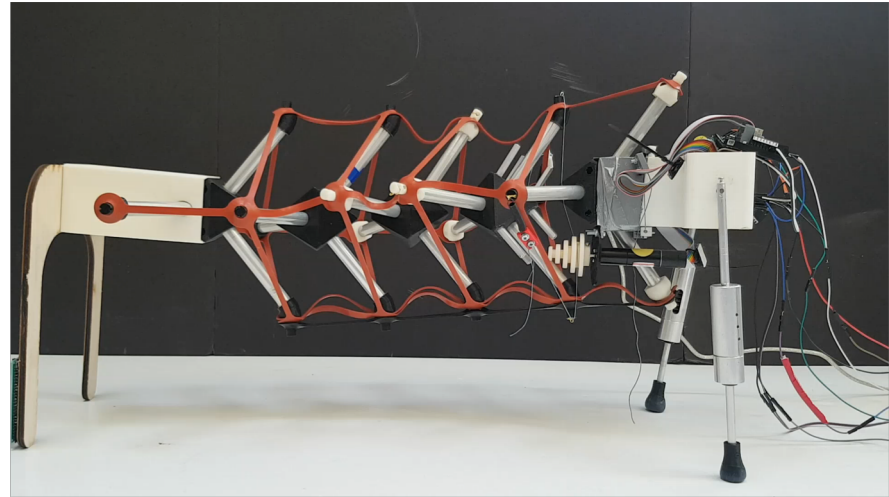


# Laika and Belka: Walking Robots with Flexible Spines

Andrew P. Sabelhaus  
Ph.D. Candidate,  
Mechanical Engineering,  
UC Berkeley

NASA Ames Research  
Center



Laika's spine can be  
controlled with to bend in  
any direction...

...and can balance the robot  
on each of the it four legs.

