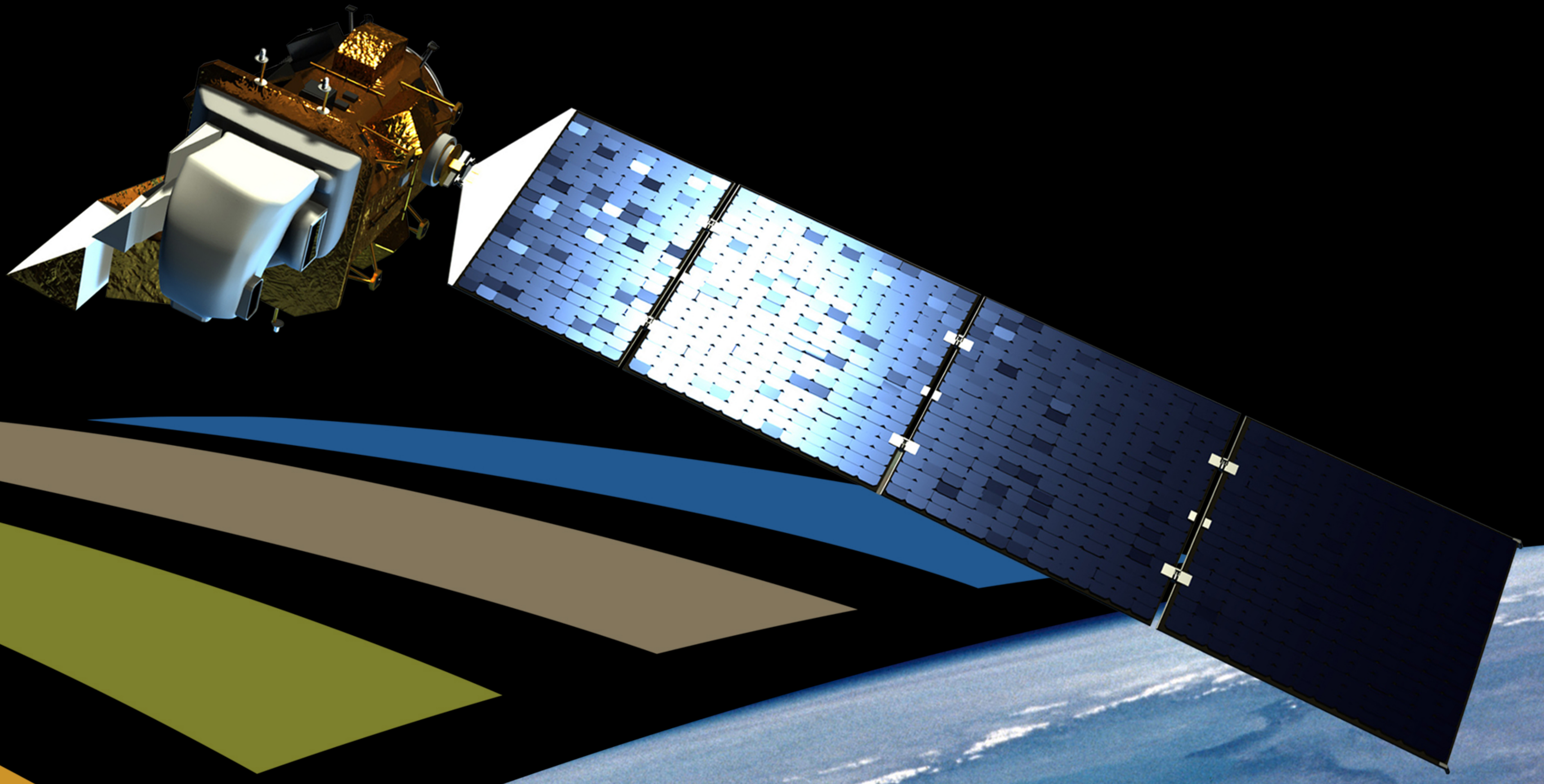
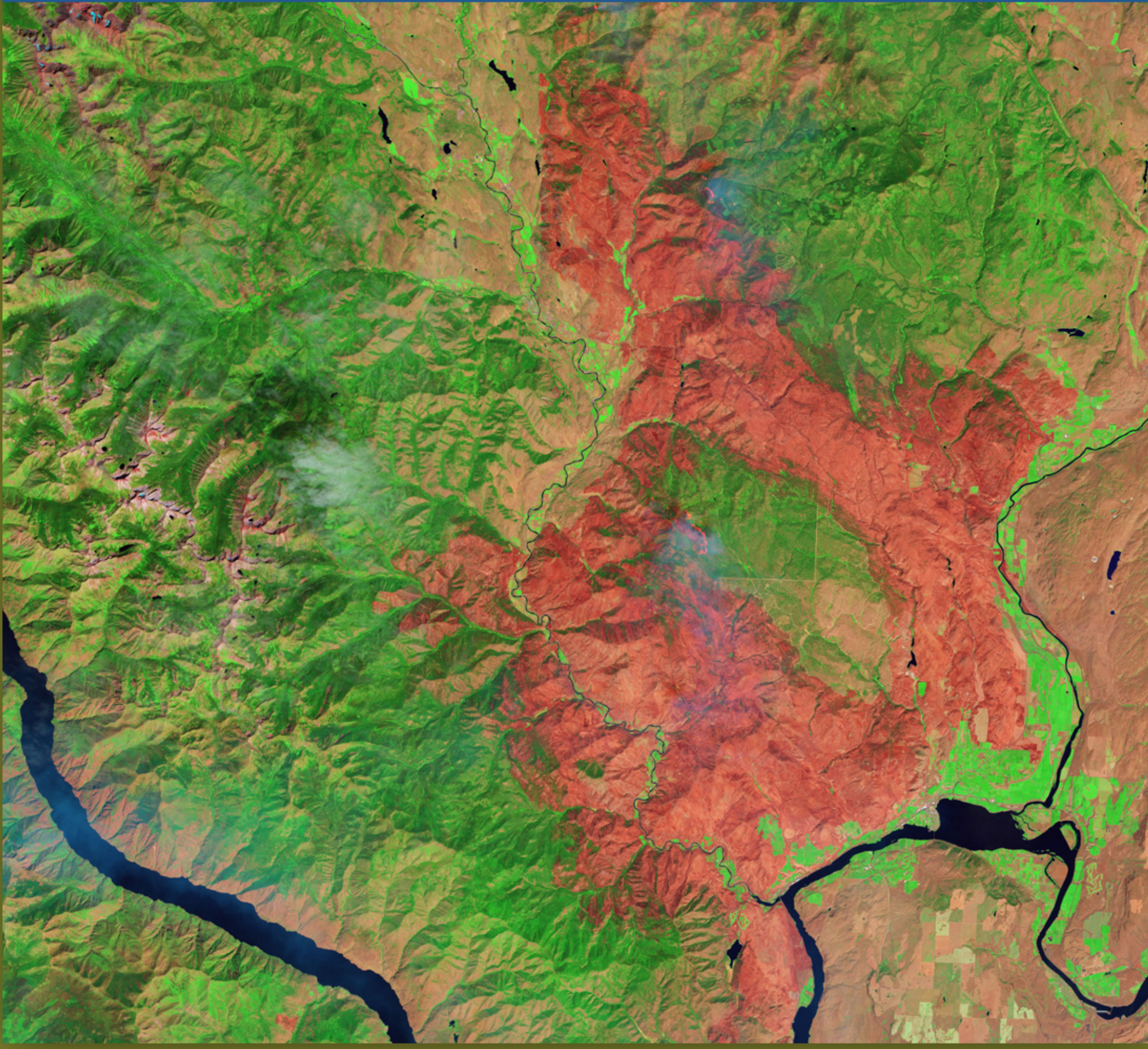


Landsat



— The mission continues

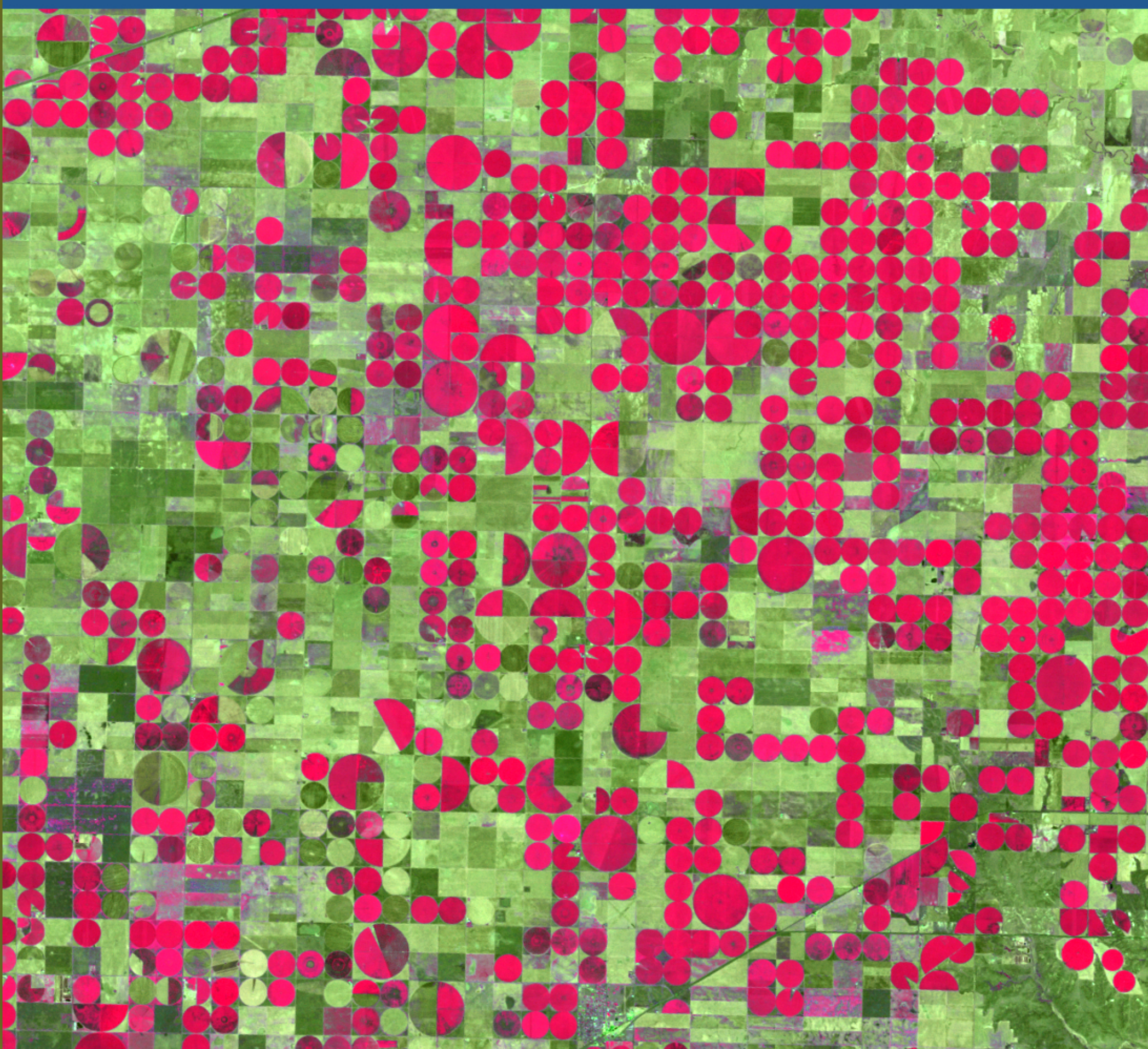
Forest Fire Damage



Glaciers and Sea Level Rise



Agriculture and Groundwater



The Mission

With the launch of Landsat 8 in 2013, the Landsat program has created a continuous record of global land cover change spanning more than 40 years. Landsat data is used in science, agriculture, education, business, and government. The Landsat Program is a joint endeavor between NASA and the United States Geological Survey in the Department of the Interior.

The Science

Landsat takes specialized images of Earth's continents and surrounding coastal regions, enabling people to study many aspects of our planet and to evaluate the dynamic changes caused by both natural processes and human practices.