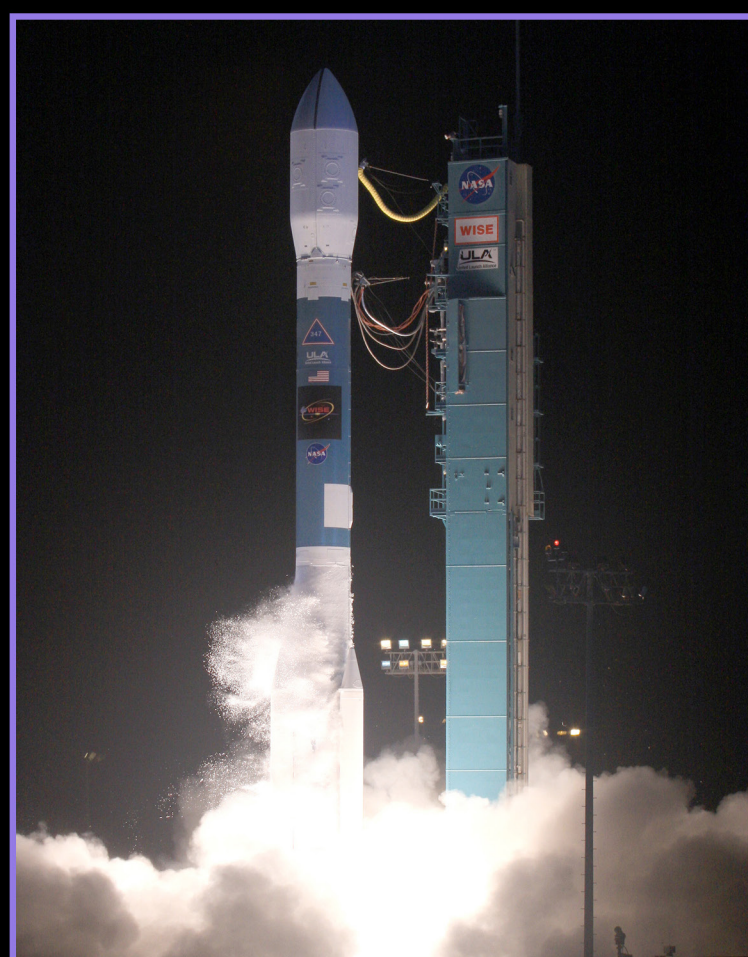


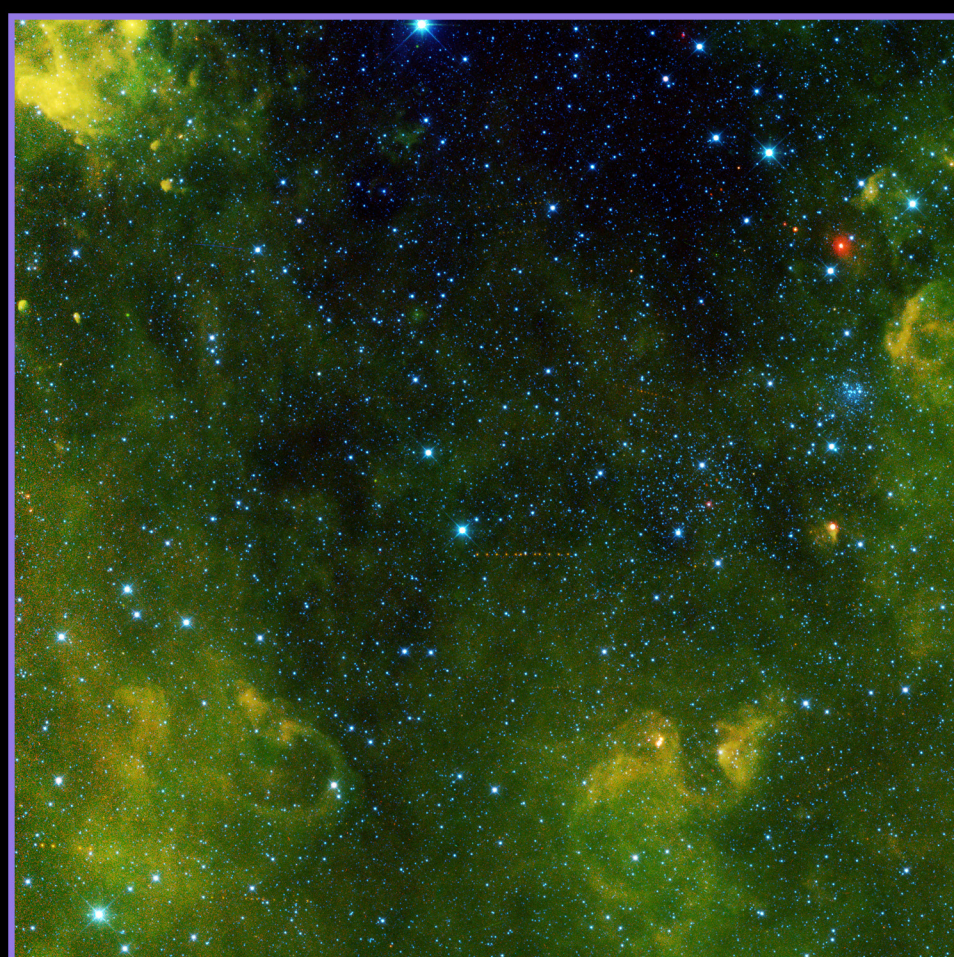
NEOWISE

Wide-field Infrared Survey Explorer

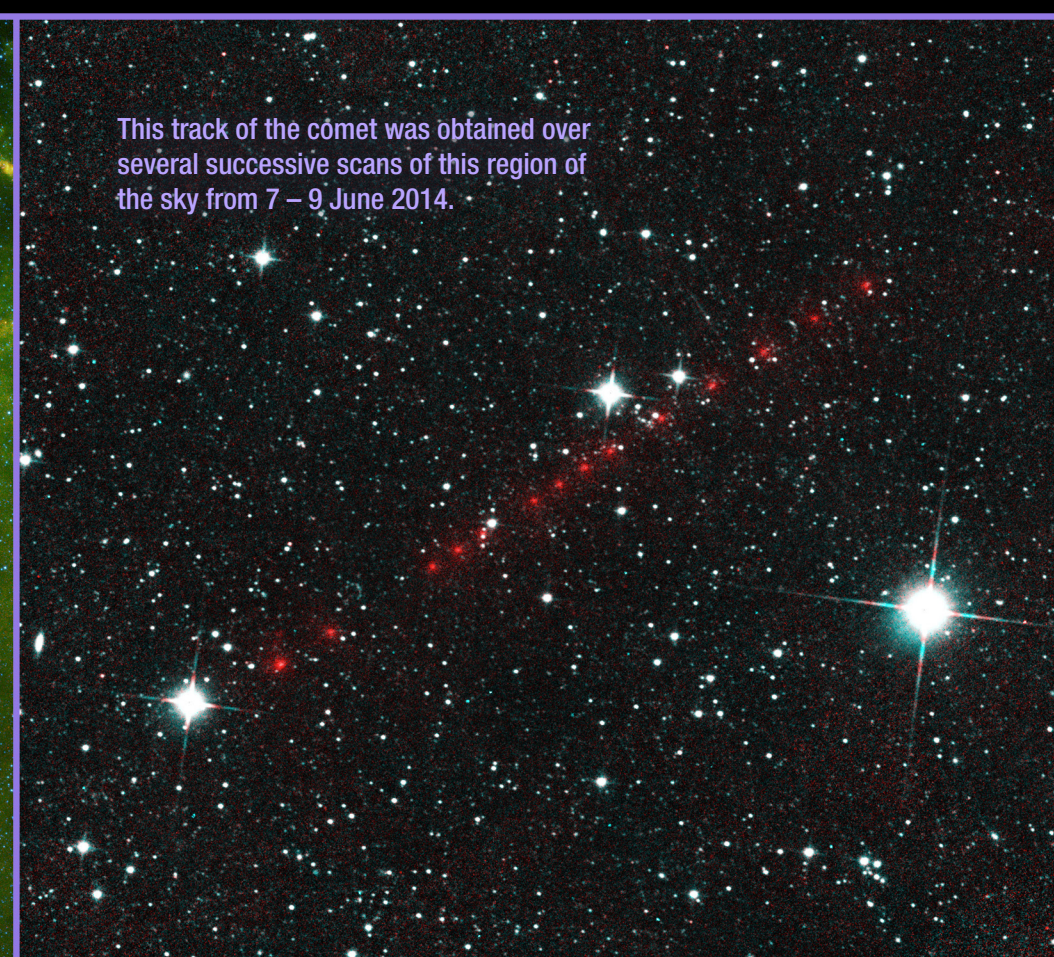
WISE is an infrared astronomical telescope launched in December 2009 and placed in hibernation in February 2011. This unique space telescope was reactivated and resumed its new prime mission as an asteroid and comet hunter, re-dubbed 'NEOWISE,' in December 2013 — which continues today.



Launch: Delta II – December 14, 2009



Asteroid Tracks Among the Stars in M35 – March 2010



This track of the comet was obtained over several successive scans of this region of the sky from 7 – 9 June 2014.

Comet NEOWISE (P/2014 L2) – Discovered June 7, 2014