



Make Your Own NASA Psyche Mission Spacecraft Paper Model



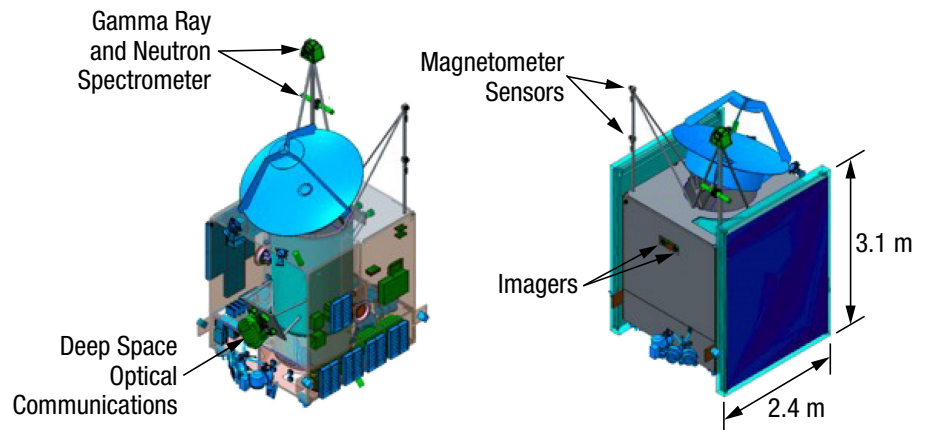
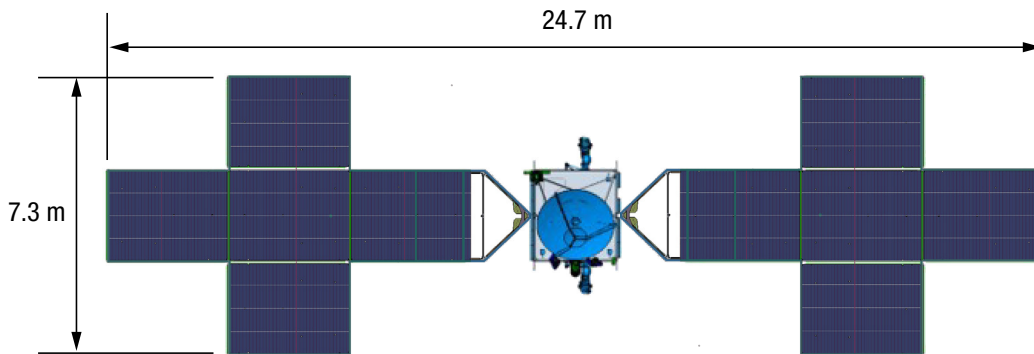
NASA Psyche Mission

Psyche is both the name of an asteroid orbiting the Sun between Mars and Jupiter – and the name of a NASA space mission to visit that asteroid, led by Arizona State University. The mission was chosen by NASA for the agency's Discovery Program.

Psyche Spacecraft

✚ The full spacecraft, including the solar panels, is about the size of a (singles) tennis court.

✚ The bus (body) of the spacecraft is slightly bigger than a Smart Car.



Learn more about the
Psyche spacecraft

Age level: Grades 5–8

Degree of difficulty: Beginner

Estimated time to build as an individual: ~1.5 hrs

Estimated time to build as a group: ~1 hr (Tip: Reduce build-time by dividing into teams for cutting and gluing.)

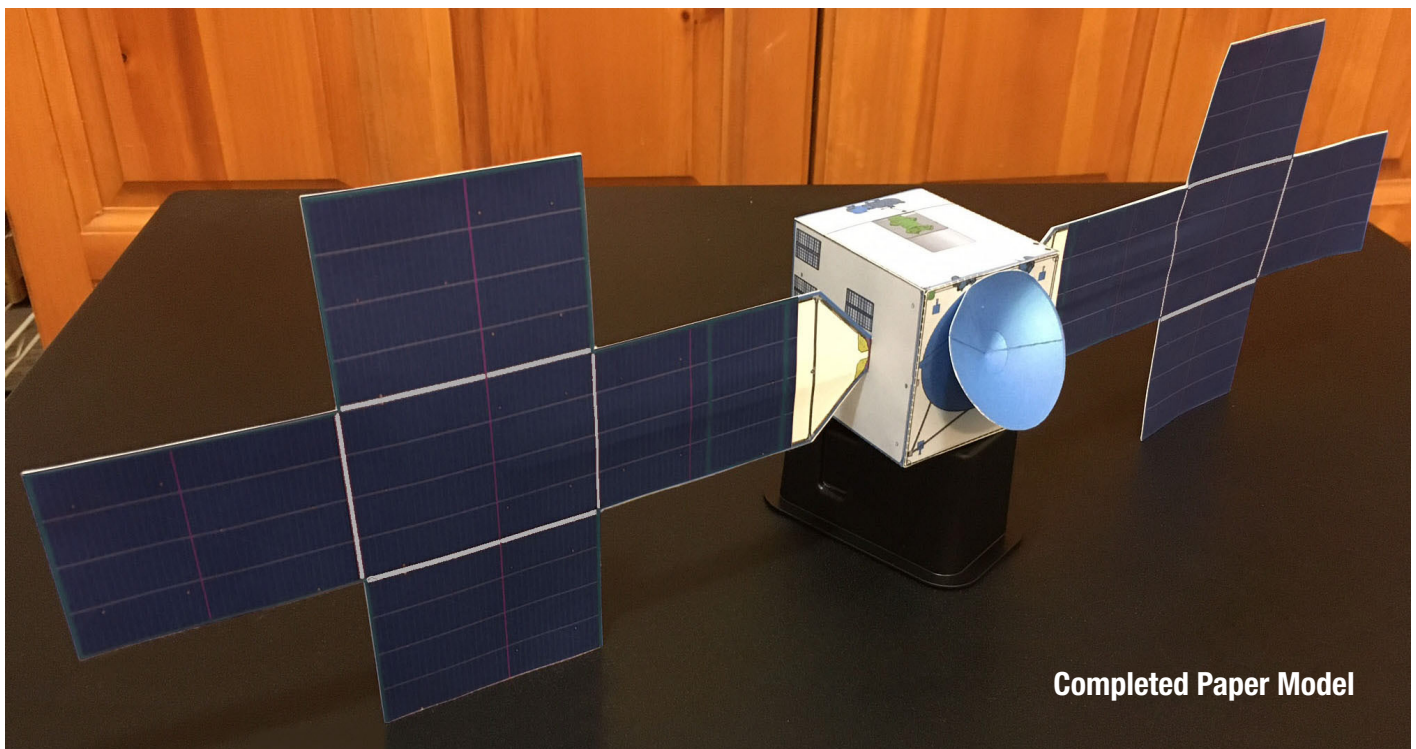
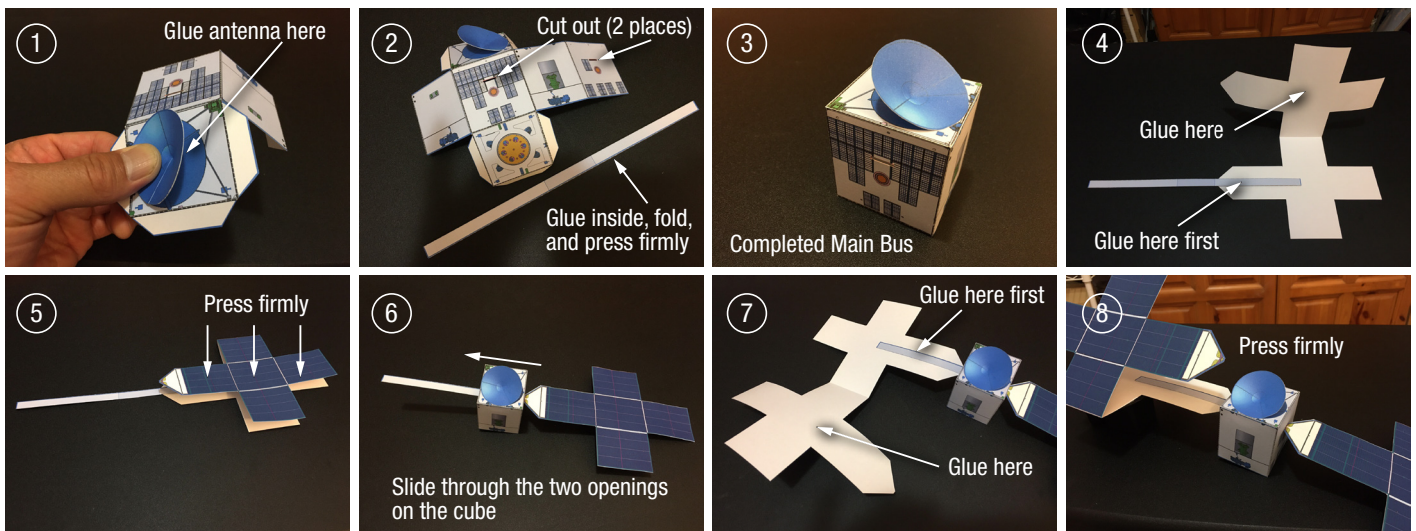
Finished model size: 17 inches long

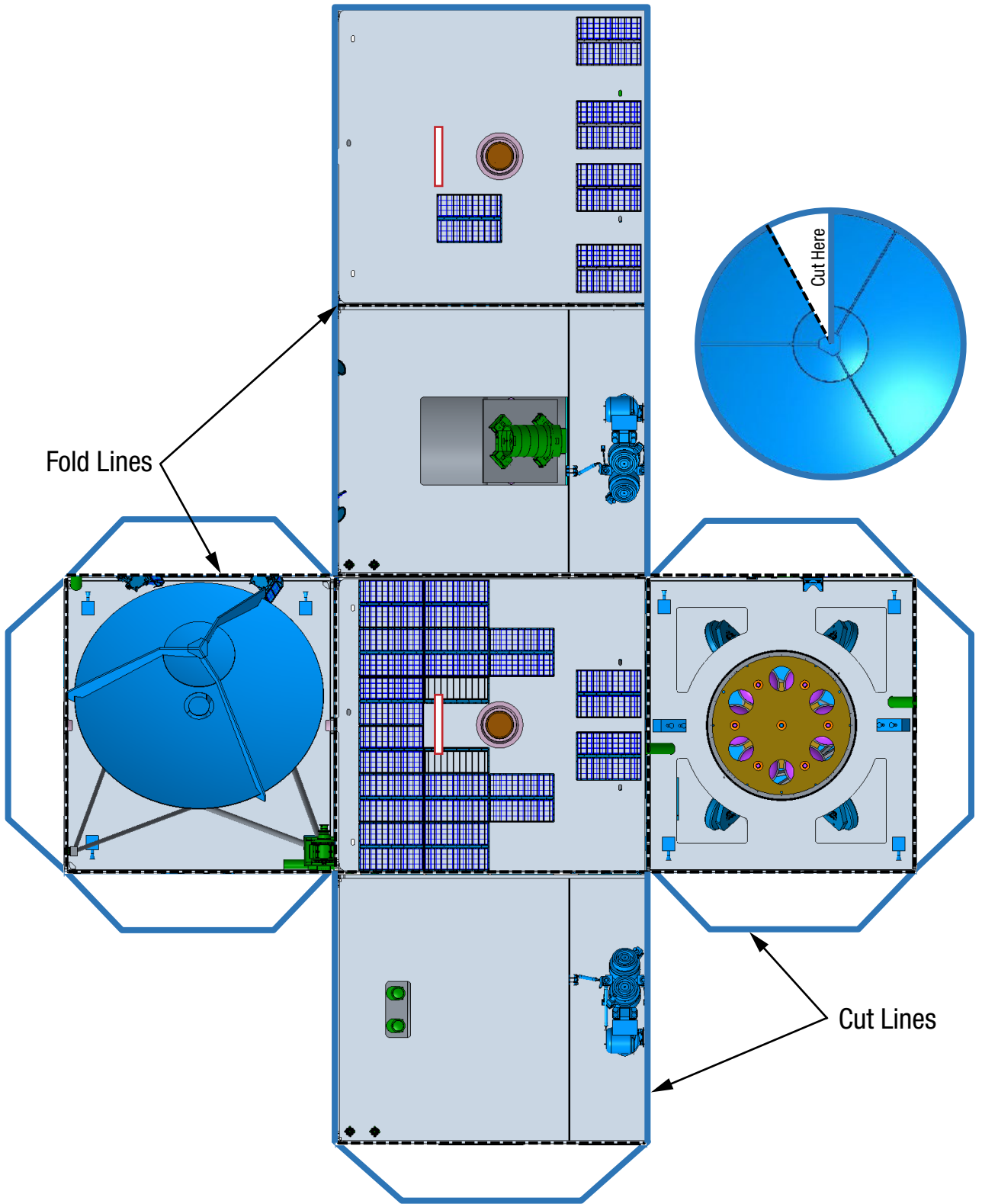
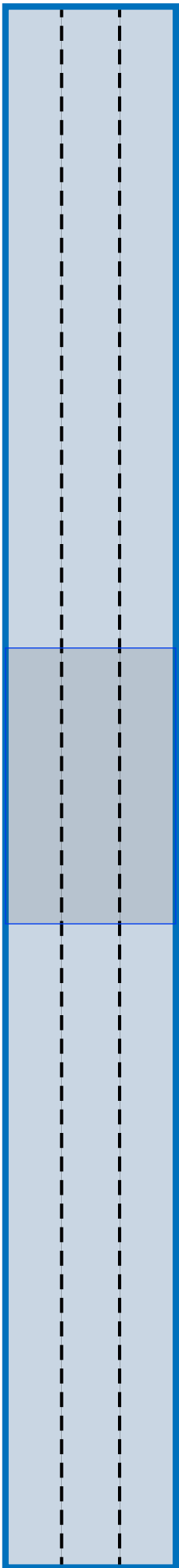
Required Materials

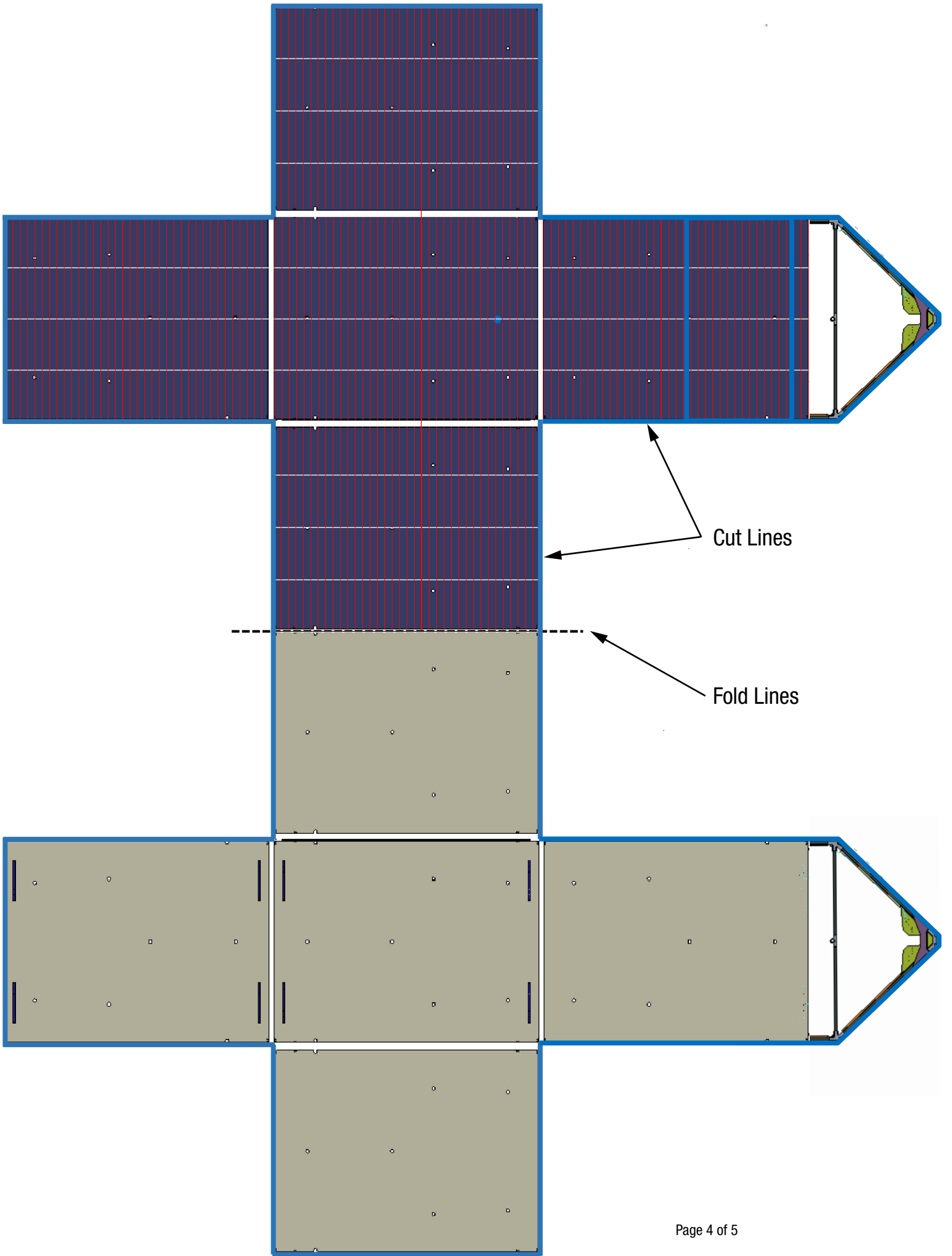
Three sheets of white cardstock
(recommended 65 lb weight)
Glue stick (Liquid glue is not recommended)
Scissors
X-acto knife (with supervision)
Ruler

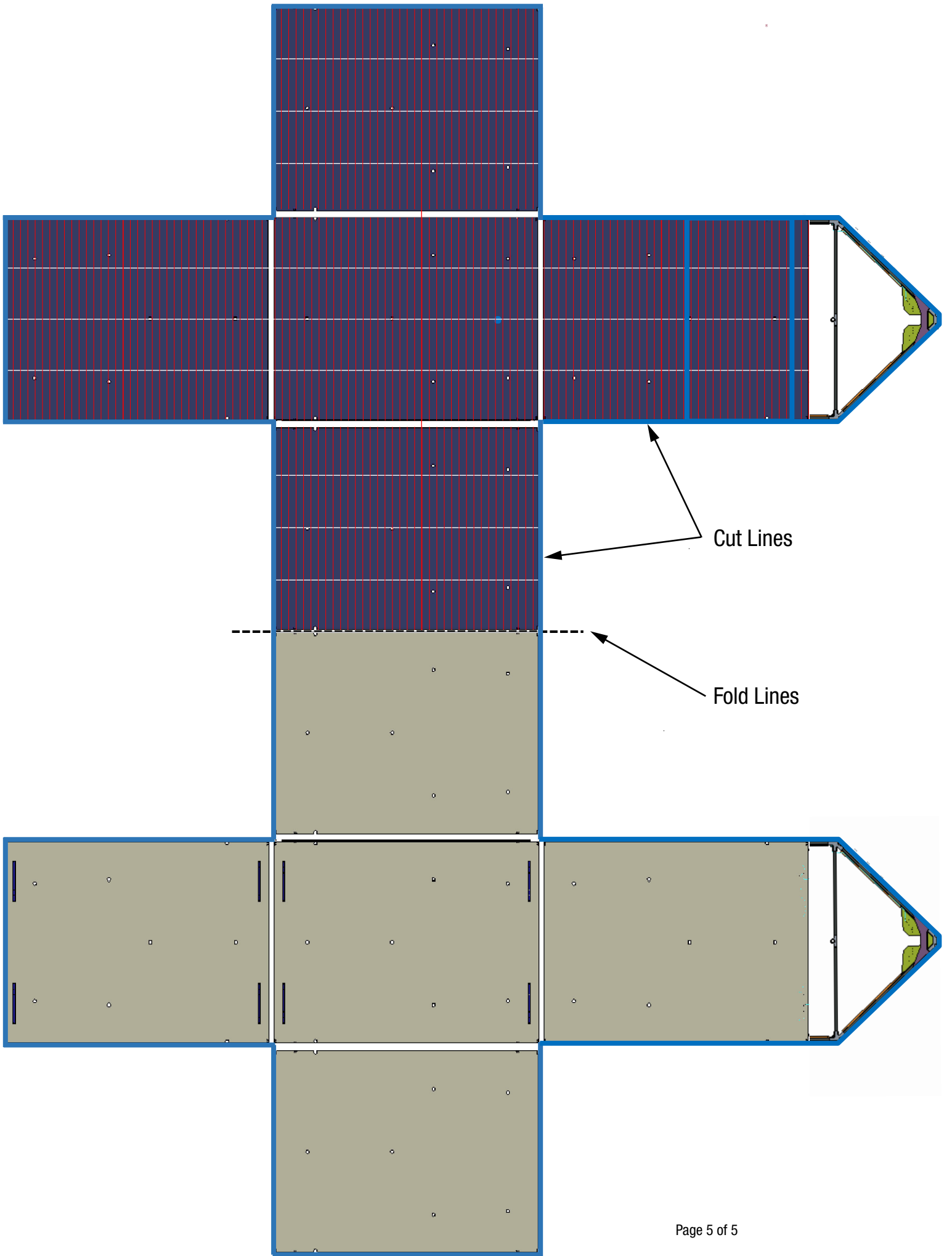
Print pages 3–5 of this instructional PDF in color on white cardstock. Use an X-acto knife or scissors (gently press to avoid cutting through) to score along all the dashed lines. Next, cut out all the parts, fold where indicated, and apply glue per instruction.

Make sure to follow this instructional sequence to assemble.









Cut Lines

Fold Lines