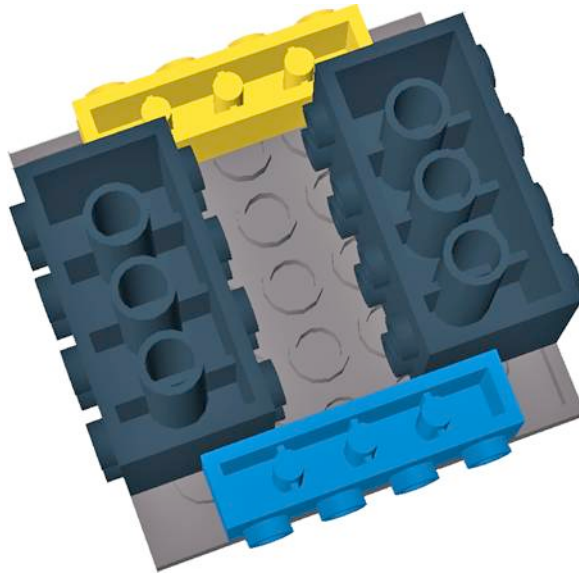


Lego™ LRO Assembly Instructions

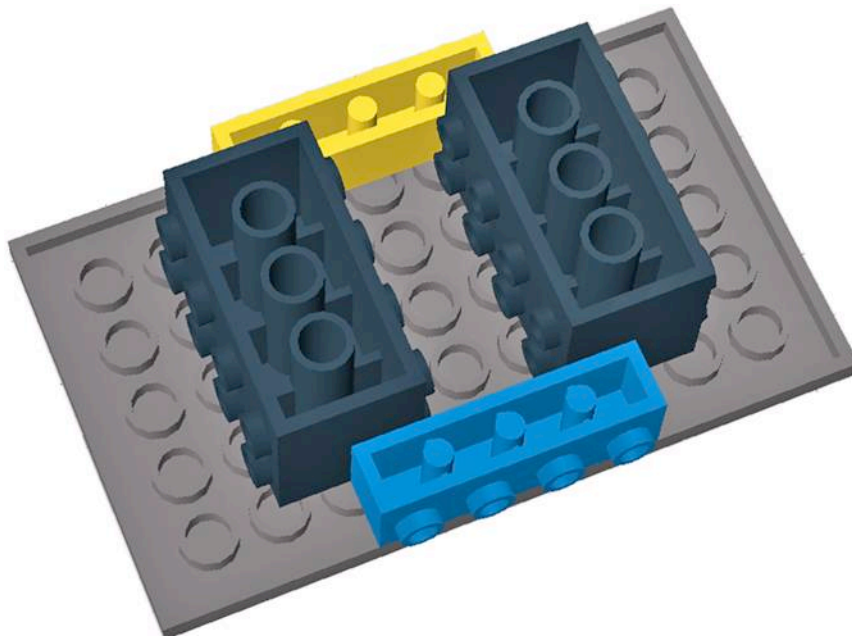
Step 1:

You will need: 1 6x6 plate, 2 knob stones, 2 1x4 bricks with 4 knobs (1 yellow, 1 blue). Assemble as shown. Set aside.



Step 2:

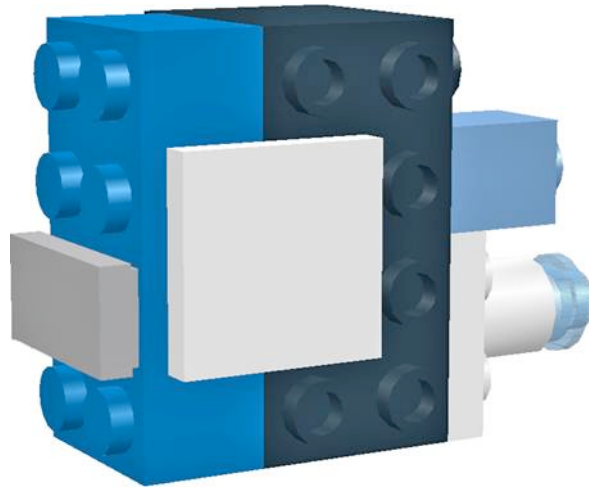
You will need: 1 6x10 plate, 2 knob stones, 2 1x4 bricks with 4 knobs (1 yellow, 1 blue). Assemble as shown. Set aside.



Lego™ LRO Assembly Instructions

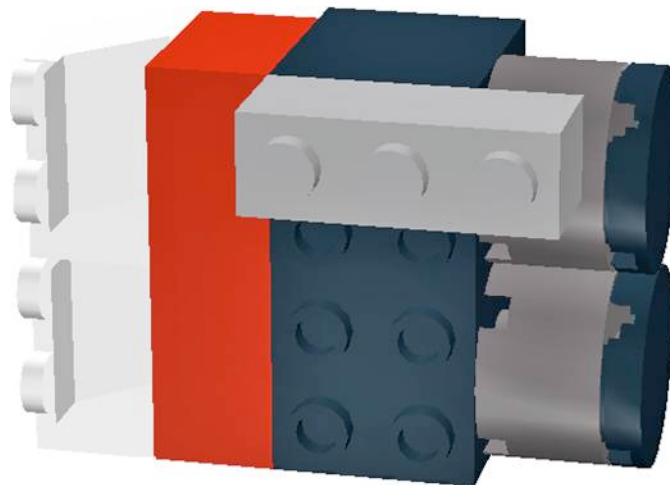
Step 3:

You will need: 1 knob stone, 1 2x4 brick (black), 1 1x2 flat tile (gray), 1 2x2 flat tile (white), 1 2x2 plate (white), 1 1x1 round brick (white), 1 1x1 round plate (transparent blue), and 1 1x1 brick (white). To make it easier to see piece locations, the below images are **not true color**. Assemble as shown. Set aside.



Step 4:

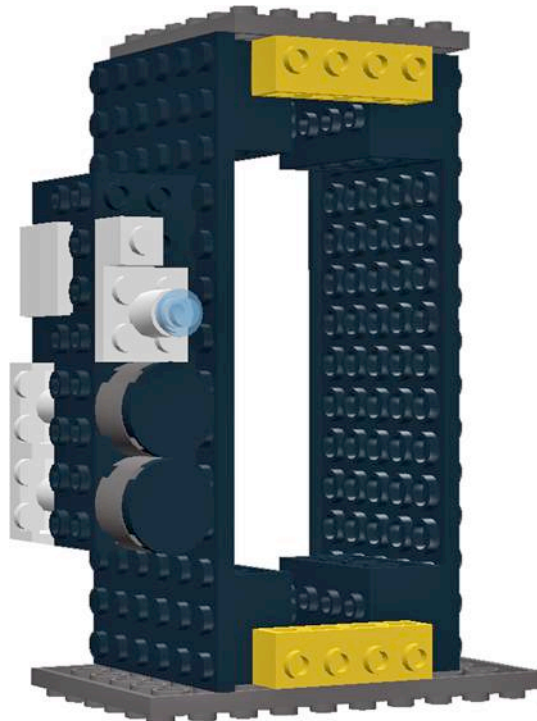
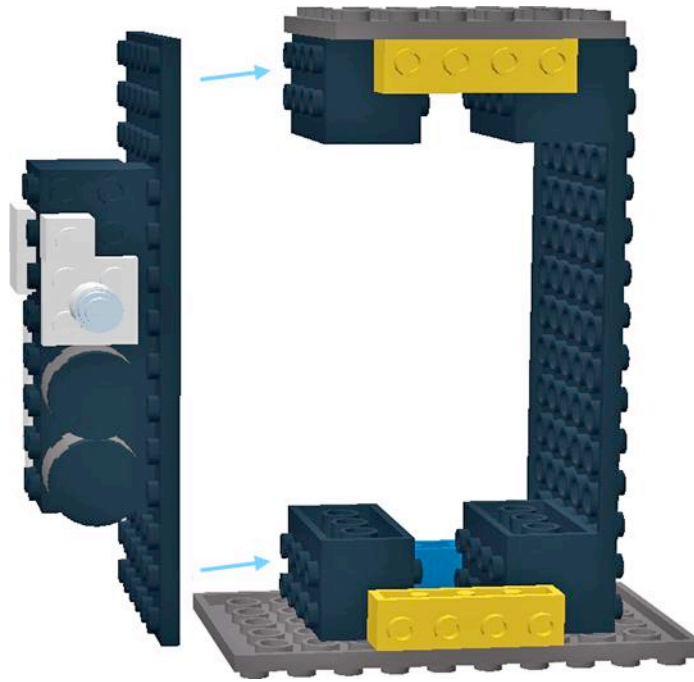
You will need: 1 knob stone, 1 2x4 brick (black), 1 1x3 brick (gray), 2 2x2/45° tiles (clear), 2 2x2 round bricks (gray), 2 2x2 round flat tiles (black) To make it easier to see piece locations, the below images are **not true color**. Assemble as shown. Set aside.



Lego™ LRO Assembly Instructions

Step 6:

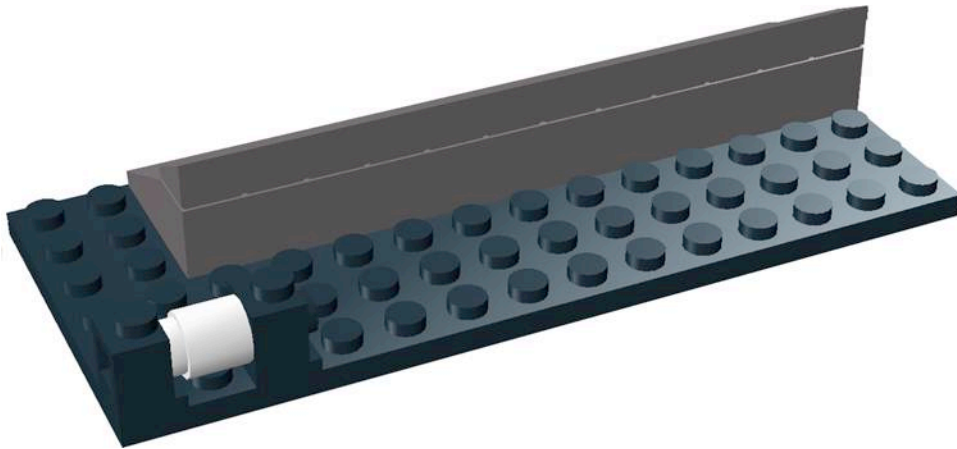
You will need: 1 6x14 plate, assemblies from steps 1, 2 and 5. Assemble as shown by gently pressing side plates against top and bottom plates. Set aside.



Lego™ LRO Assembly Instructions

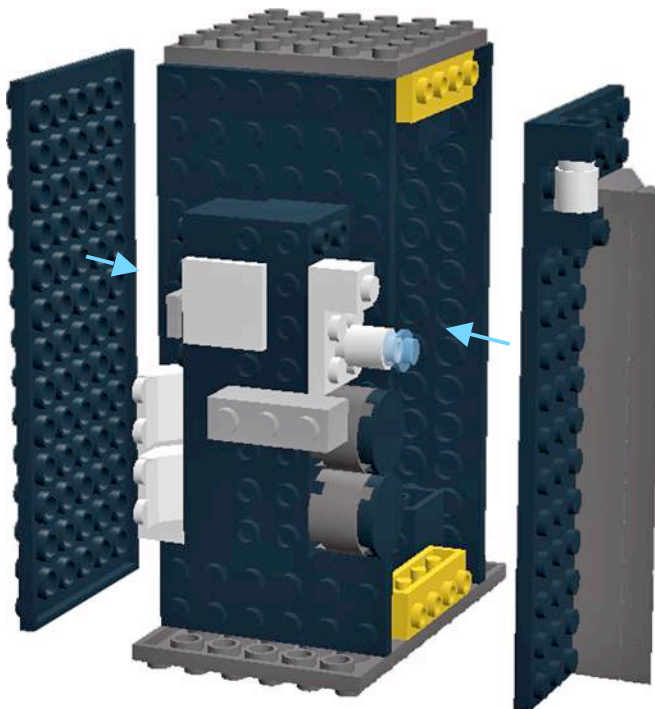
Step 7:

You will need: 1 6x14 plate, 3 3X4/25° roof tiles (gray), 12 1x1x2/3 roof tiles (gray), 1 1x1 round brick (white), 2 1x1 angular bricks (black).
Assemble as shown. Set aside.



Step 8:

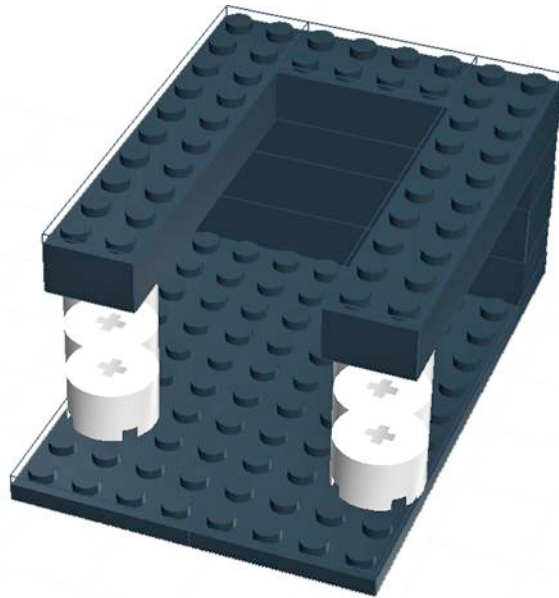
You will need: 1 6x14 plate, assemblies from steps 6 and 7. Assemble (gently) as shown. Set aside.



Lego™ LRO Assembly Instructions

Step 9:

You will need: 6 2x2 round bricks (clear), 2 4x12 plates (black), 3 2x8 bricks (black), 2 2x10 bricks (black), 1 2x4 brick (black). Assemble as shown. This will be the base your model rests upon. Set aside.



Step 10:

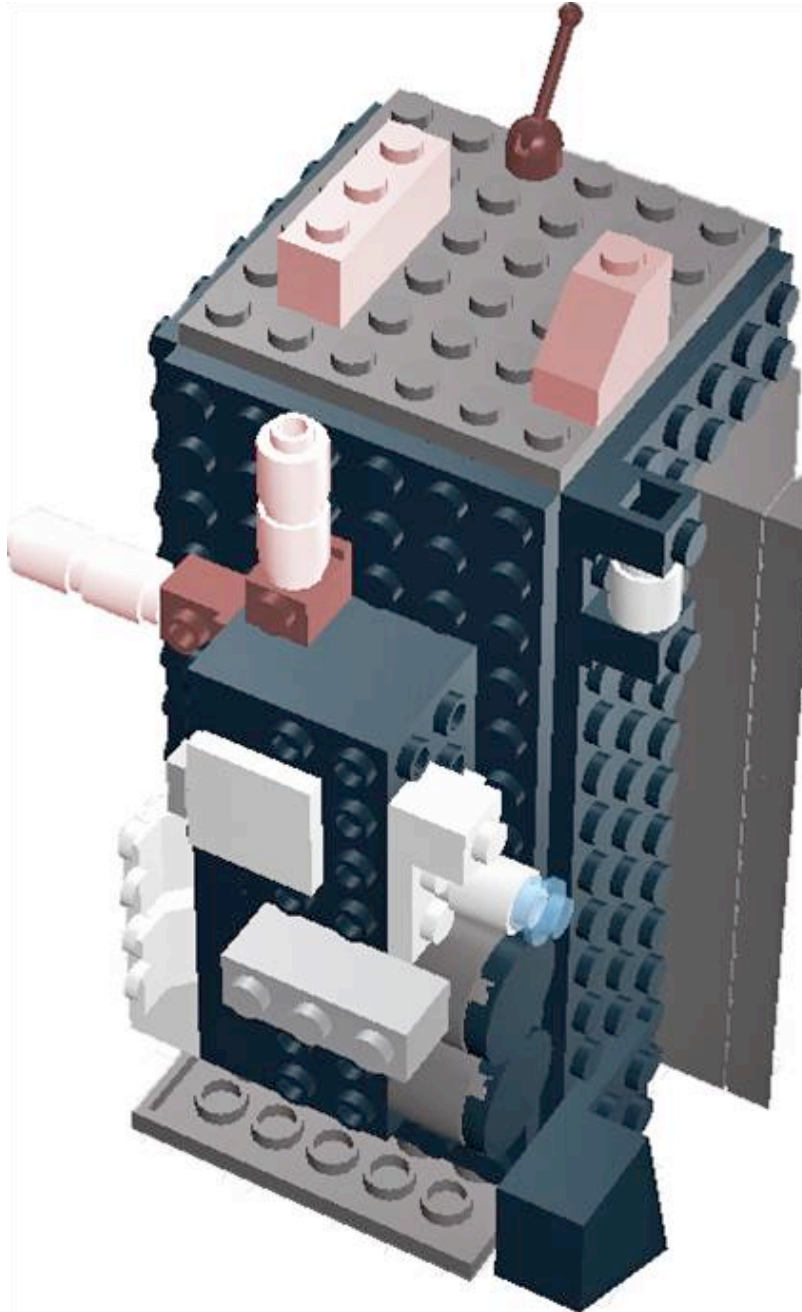
You will need: 1 1x1 round plate (transparent yellow), 1 Ø32X6.4 round plate (black), 1 lamp holder (gray), 1 1x2 plate with vertical fork (gray), 1 1x2 plate with shaft (gray), 1 1x2 plate with stub (black). Assemble as shown. Set aside.



Lego™ LRO Assembly Instructions

Step 12:

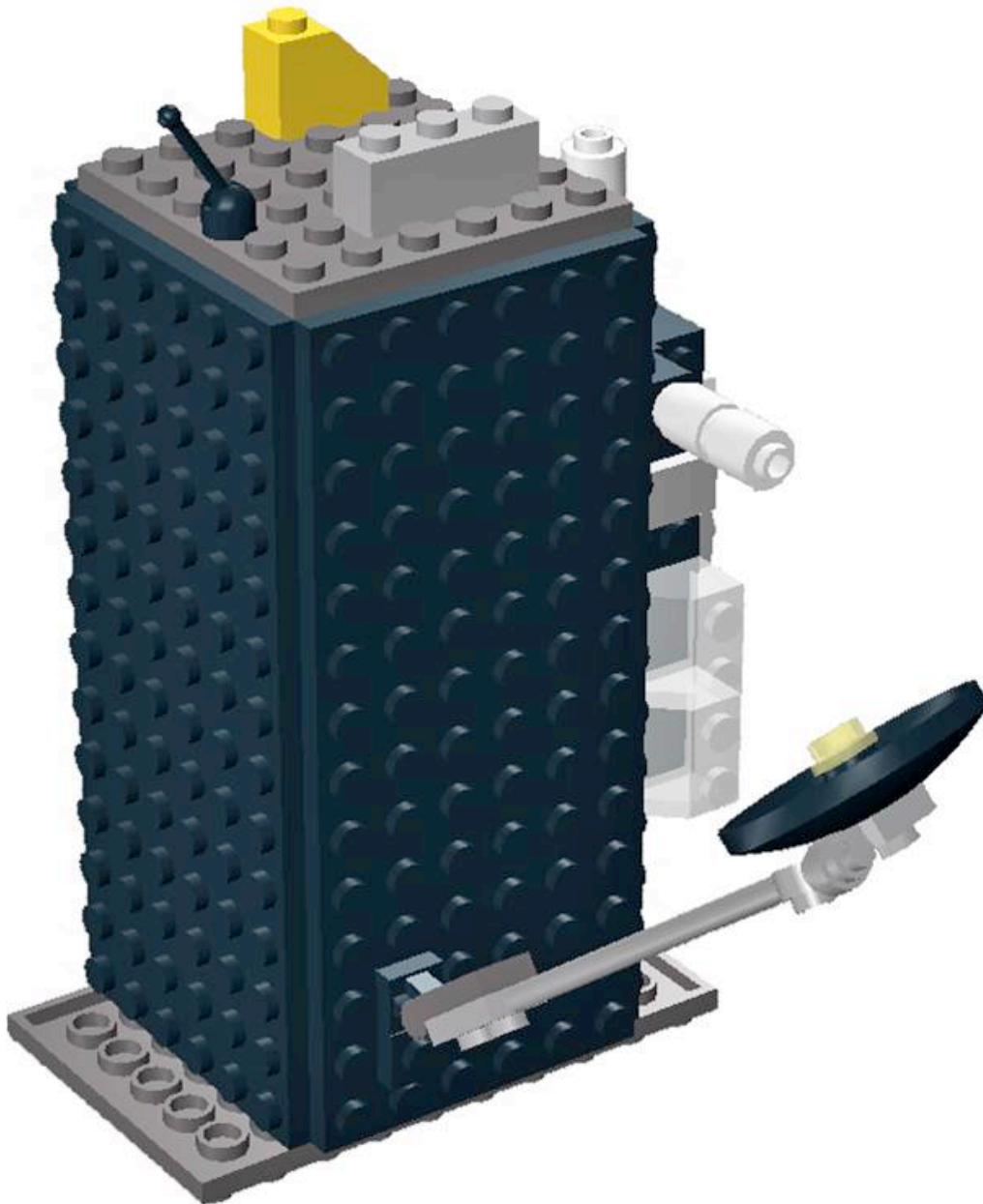
You will need: 4 1x1 round bricks (white), 2 1x1 angular bricks, 1 1x3 brick (gray), 1 1x2/45° roof tile (yellow), 1 1x2 plate (yellow), 1 mini-antenna, and the assembly from step 11. (New parts tinted red.) Assemble as shown. Set aside.



Lego™ LRO Assembly Instructions

Step 13:

You will need: Assemblies from steps 10 and 12. Assemble as shown. Set aside.



Lego™ LRO Assembly Instructions

Step 15:

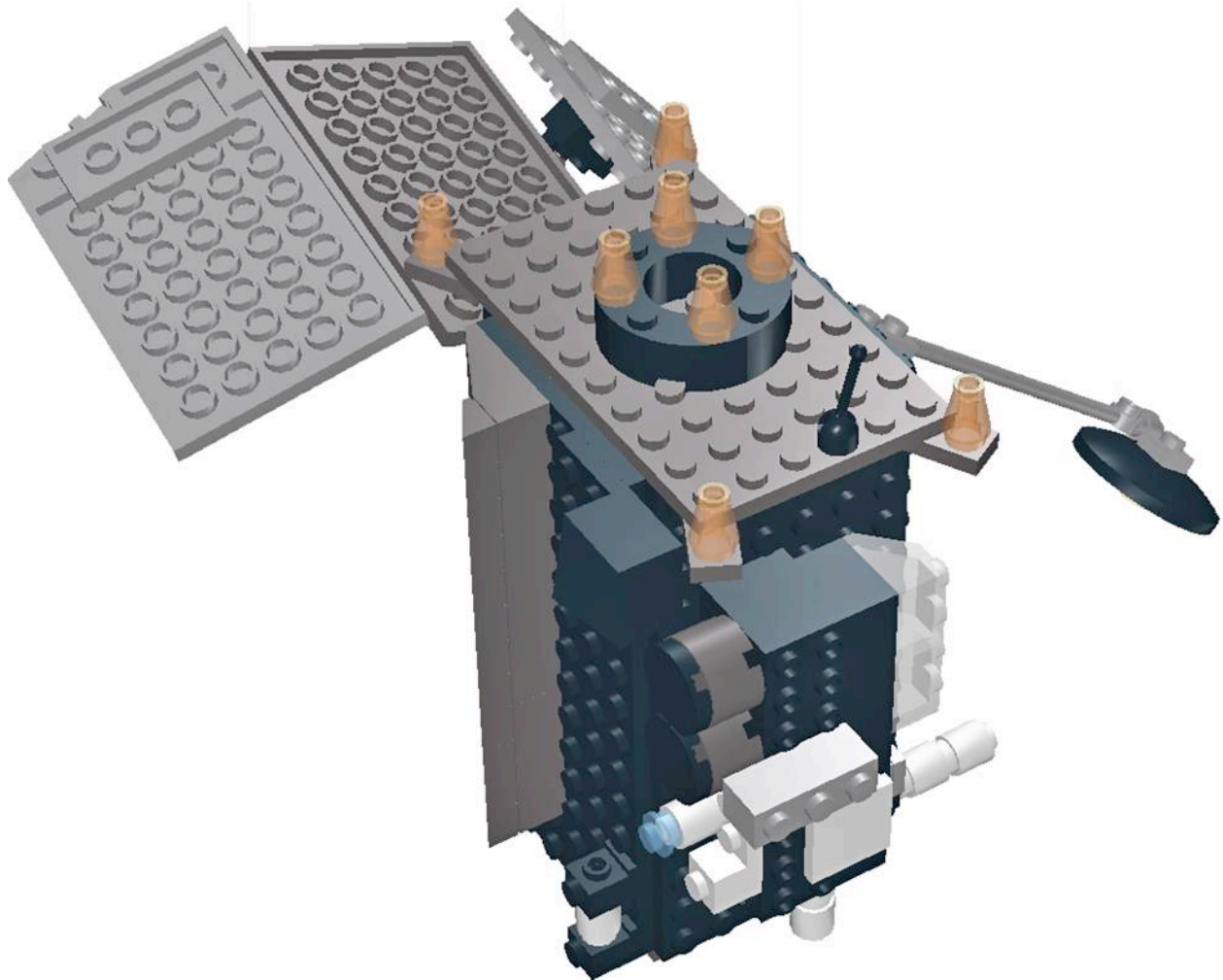
You will need: Assemblies from steps 13 and 14. To make it easier to see piece locations, the below image is **not true color**. Assemble as shown. Set aside.



Lego™ LRO Assembly Instructions

Step 16:

You will need: 4 1x2 plates (gray), 4 curved bricks w/2 knobs (black), 8 1x1 small nose cones (transparent orange), 1 mini antenna, and the assembly from step 15. Assemble as shown. Set aside.



Lego™ LRO Assembly Instructions

Rest the model on the base you built in step 9.

Congratulations on completing your Lego LRO!

