

# **Network for Ocean Worlds**

Geo- and Life-Science Research on Earth

+

Space-Science Expertise

=

**Search for Life in Ocean Worlds Beyond Earth**



Jackie  
Grebmeier



Alison  
Murray



Kathryn  
Pietro



Chris  
German



Shannon  
MacKenzie

url: [oceanworlds.space](https://oceanworlds.space)

# NOW: Network Community

75 NASA funded projects = 250+ active researchers

15 NASA R&A Programs + 2 Already Approved Missions

CDAP	Hab. Worlds	IRES	PICASSO	SESAME
Cold Tech	ICAR	MATISSE	PSIE	SSO
Exobiology	ICEE-2	PDART	PSTAR	SSW
	<b>Clipper</b>		<b>Dragonfly</b>	

With 809 *Affiliates* total NOW community exceeds 1000

**FLOW** (Future Leaders for Ocean Worlds) is our stand-alone **Early Career Network**

# NOW: Research Themes, Links

Physical Properties of Ocean Worlds



Life Detection on Ocean Worlds



Analog Studies Relevant to Ocean Worlds



New Technologies for Ocean World Missions



PESTO  
Office

# NOW: OWL Recommendation



2023-2032 Decadal Plan: first to incorporate  
Planetary Sciences *and Astrobiology*

url: [www.lpi.usra.edu/owwg/](http://www.lpi.usra.edu/owwg/)

# NOW: OWL Recommendation

The need for coordinated exploration strategies

NASA should develop scientific exploration strategies, as it has for Mars, in areas of broad scientific importance, e.g. Venus and ocean worlds, that have an increasing number of U.S. missions and international collaboration opportunities



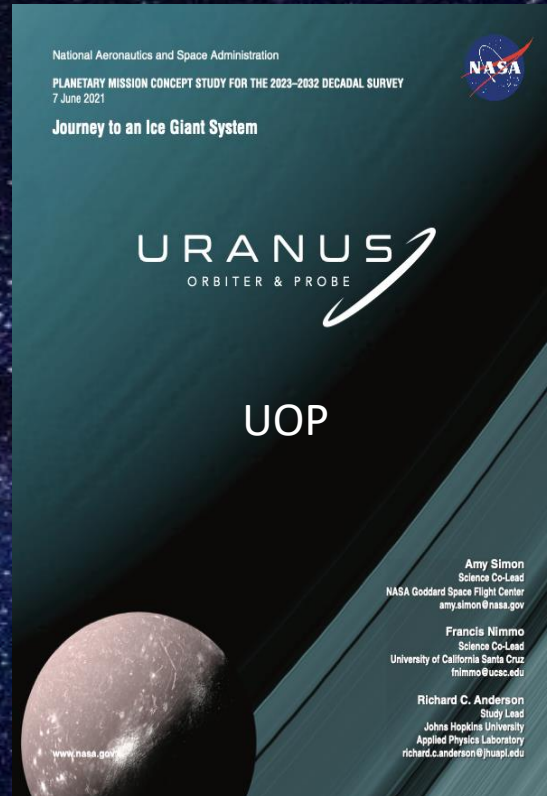
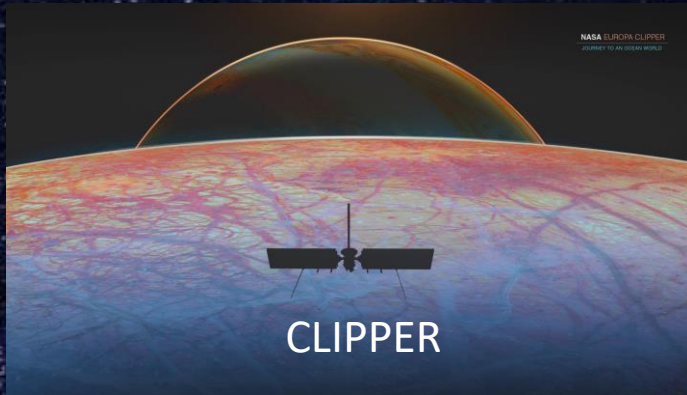
69

Explicit recommendation to NASA:

Develop a strategy for Ocean Worlds Exploration

url: [www.lpi.usra.edu/owwg/](http://www.lpi.usra.edu/owwg/)

# NOW: OWWG (with OPAG)



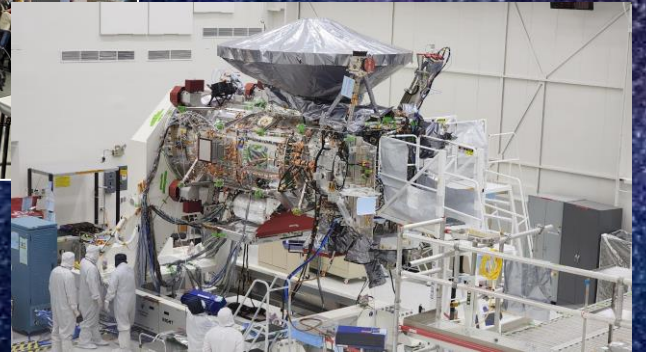
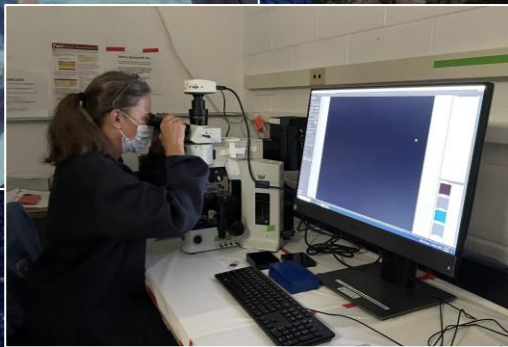
OPAG & NOW joint action: a strategic **Ocean Worlds WG**  
[Cadence of Flagship & NF recommendations => acute need]

url: [www.lpi.usra.edu/owwg/](http://www.lpi.usra.edu/owwg/)

# NOW: Effective Engagement

*In Network:*

Annual St.Comm. Retreat [e.g. Catalina, 2023]



*Community Wide:*

**Ocean Worlds Gordon Conference Series**