



#RunwayToJupiter NASA Style Challenge

This October, NASA will launch Europa Clipper to explore Jupiter's mysterious moon, Europa. Traveling 1.8 billion miles, this robotic spacecraft will investigate Europa's icy surface and the vast ocean beneath — a key contender in the search for life beyond Earth. The mission will study Europa's ice shell, subsurface ocean, and chemistry to determine if this alien world has the right conditions to support life today.

Express your space style! Show off outfits, makeup, nail art, and other creative expressions that capture Jupiter's swirls, Europa's icy glam, and the exploration of our solar system.

Share your look by October 10, 2024 for a chance to be featured by NASA!

HOW TO PARTICIPATE :

STEP 1 *Get inspired* ✨

Explore the **creative brief**, featuring a mood board of colors, textures, and environmental conditions inspired by Jupiter's swirling clouds and Europa's frozen surface.

STEP 2 *Create your look* 🎨

Craft your own cosmic style with clothing, makeup, jewelry, and accessories! Get creative with what you have, whether you're going for a glamorous icy ensemble, a cosmic makeup look, or nails that mimic Europa's terrain.

STEP 3 *Share it with the world* 🙌

Share your look on Instagram, X, Facebook, or other social media platforms using the hashtag **#RunwayToJupiter** for a chance to be featured on NASA's website, NASA's social media channels, and Europa Clipper's launch broadcast.

COLORS *Space spectrum* 🌌

Harness the visual beauty of Jupiter and Europa with a curated palette:

#D2C6B9 EUROPA TAN
#F7BDAE EUROPA PINK
#EAF9FF EUROPA ICE BLUE
#D7A04E JUPITER YELLOW BROWN
#AB4335 JUPITER RED
#000000 SPACE BLACK
#28593 DEEP OCEAN BLUE
#58D0EF UNDERWATER TEAL
#8ABFF4 - #DFDFE3 COOL METALLIC SILVER

MATERIALITY *Give us texture* 🍷

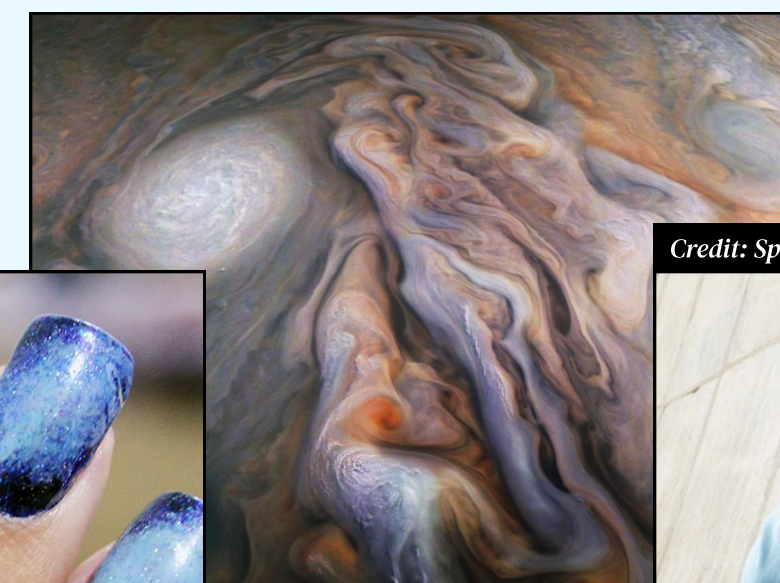
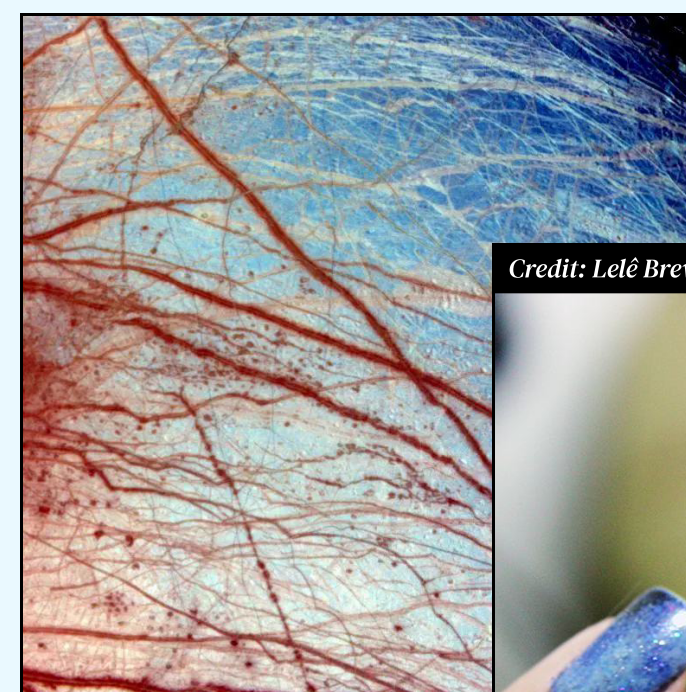
In what ways can you bring out the unique features of Jupiter and Europa?

- **Fluid Fabrics:** Choose silks and other materials that flow and move, mirroring Jupiter’s atmosphere.
- **Glossy and Shiny Materials:** Use metallics and gloss to reflect Europa’s icy sheen and the dynamic nature of its surface.
- **Layering:** Layer different textures to simulate Europa’s complex surface.
- **Texture and Stripes:** Mimic Europa’s chaos regions and stripy surface through your fabric choices.

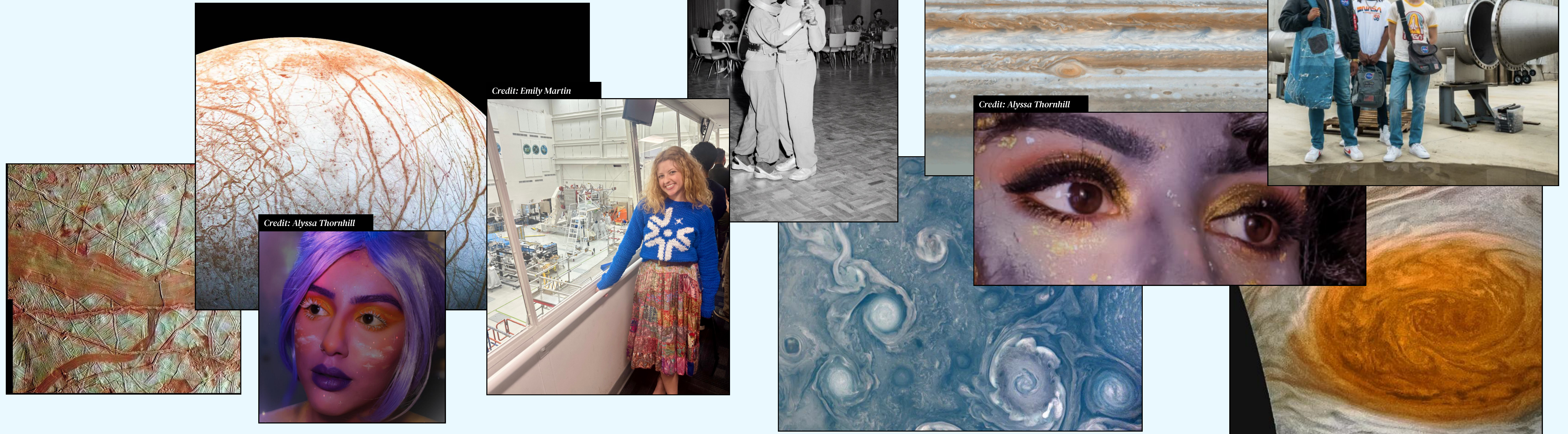
CONDITIONS *Ice ice baby* ❄️

Leverage the extreme environments that define Europa and Jupiter:

- **Extreme Cold:** Europa’s surface is incredibly cold, with surface temperatures averaging -160°C (-260°F) due to its distance from the Sun and the lack of a thick atmosphere.
- **Water:** Beneath Europa's icy crust lies a vast subsurface ocean, potentially twice the size of Earth's oceans.
- **Ingredients for Life:** Europa is a prime candidate for finding life beyond Earth. It has water, organic molecules, and energy – key ingredients for life.



MOODBOARD *Are you europacoded or jupitercoded?* 🤔



LET'S GO *Get ready to launch your style* 🚀

We can't wait to see how you interpret the beauty of Europa and the mysteries of Jupiter through your unique style! Let your creativity be your spacecraft, showcasing your cosmic fashion flair in the #RunwayToJupiter

NASA Style Challenge. This design brief is your launchpad — combine science and style to create something out of this world! Visit [go.nasa.gov/RunwayToJupiter](https://www.nasa.gov/runwaytojupiter) for more information and to see how your creativity can shine like the stars.