

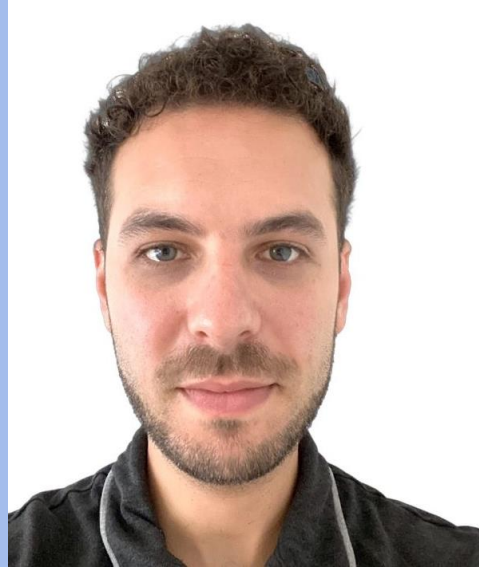
# Webinar: NASA CSDA Program Vendor Focus—Satellogic

Wednesday, March 25, 2026

# Speakers



**Mark Carmichael**  
VP of Sales, Imagery and  
Data | Satellogic



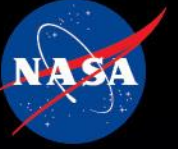
**Alan Grizek**  
Raw Imaging Team  
Manager | Satellogic



**Emma Douglas**  
Product Marketing  
Manager | Satellogic



**Taylor Struzik**  
Account Manager US  
Government | Satellogic

A satellite with two large solar panels and a white dish antenna is shown in orbit above the Earth. The satellite is emitting a bright blue beam of light towards the planet. The background is a dark space with a network of white lines and dots representing a global communication or data network.

# NASA Commercial Satellite Data Acquisition Program (CSDA) - Update

**Melissa Martin**

CSDA Program Manager  
Earth Science Division  
NASA Headquarters

**Dana Ostrenga**

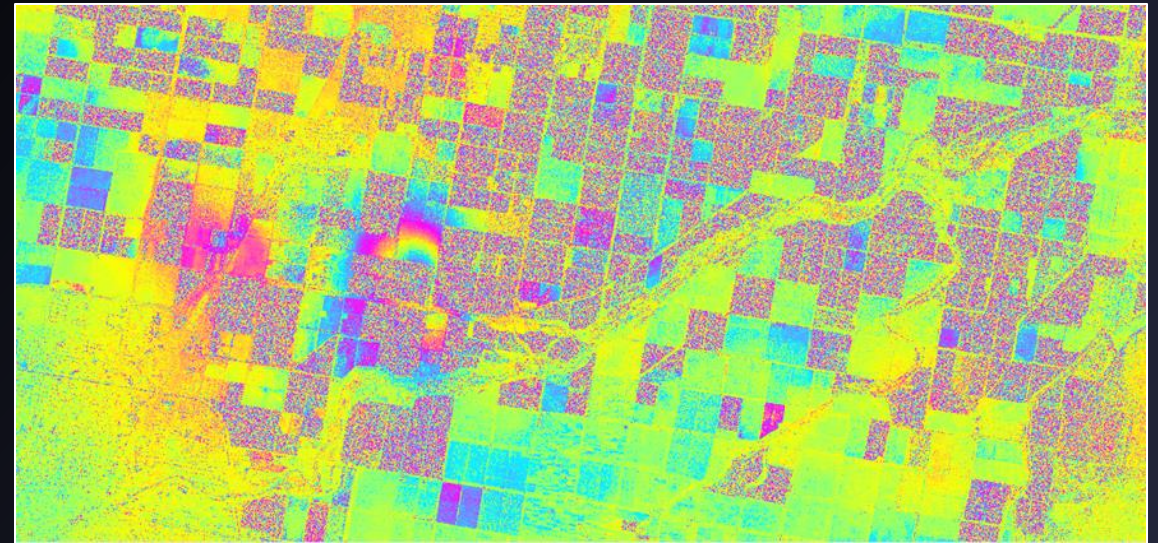
CSDA Project Manager  
Earth Science Division  
NASA Goddard Space Flight Center

# Why does NASA buy commercial data?

NASA's fleet delivers global, first-of-its kind observations with open, validated data that forms the backbone of Earth-system science and applications.

**Commercial data enhances our science and applications and makes unique contributions to our mission by offering:**

- Higher resolution & more frequent observations
- Taskable observations
- Flexible, real-time, niche data services
- Cost-effective options for users



22-day image pair in S. California showing agricultural fields and a geothermal plant.  
Includes copyrighted material of Airbus U.S copyright 2020-2021, all rights reserved.

# Combined approaches are powerful.

# ***CSDA Program Mission***

Execute a cost-effective way to augment and complement the suite of Earth observations captured by NASA and its partners for the benefit of all by identifying, evaluating, and acquiring commercial satellite data.

# ***CSDA Program Goals***

- Establish a continuous and repeatable process to on-ramp new commercial data vendors.
- Enable sustained use of purchased data for broader use and dissemination by NASA scientific community.
- Ensure long-term data preservation, access and distribution of purchased data and long-term access for scientific reproducibility.
- Coordinate with other US Government agencies and international partners on the evaluation and scientific use of commercial data.

**NASA's CSDA program introduction webinar held on August 28.**

**Recording: [Commercial Satellite Data Acquisition Program - YouTube](#)**

# CSDA Vendors

Multispectral



Hyperspectral

CH<sub>4</sub> Emissions



GNSS-R & RO



Precipitation Radar



DEMs



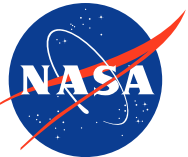
# NASA Evaluation of Data Provides Confidence in Commercial Data



Enhanced recognition among the science research and applications communities



Strengthened credibility and trust of customers and investors



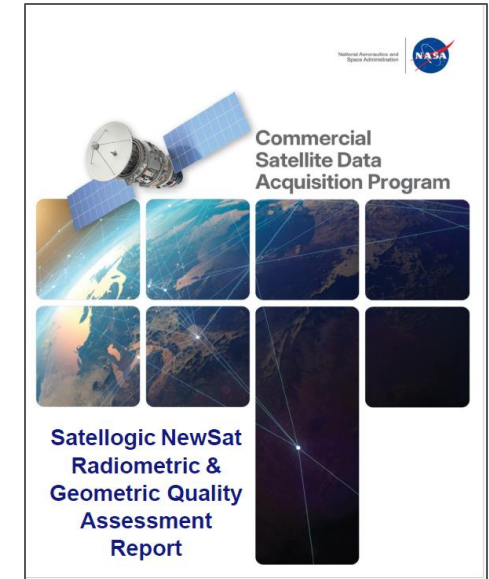
Access to NASA expertise in data quality

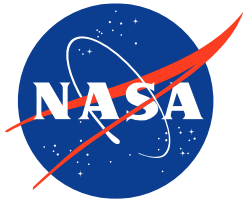


Greater exposure to the full extent of data utility

# Data Evaluation Criteria

1. Accessibility of vendor supplied imagery and data  
Ease and efficiency of search, discover, and download from vendor systems.
2. Accuracy and completeness of metadata  
Accuracy and completeness of metadata provided by vendor.
3. Quality of User Support Services  
Availability, responsiveness, and technical expertise required to answer PI inquiries.
4. Usefulness of data for advancing Earth system science research and applications  
Ability of data to support Earth system science research and applications activities.
5. Quality of vendor supplied imagery and/or data  
Data attributes such as geolocation accuracy, radiometric accuracy, and platform intercalibration. Data quality evaluation will use the ESA-NASA Evaluation Guidelines.





# ESA-NASA Joint EO Mission Quality Assessment Framework

## Purpose of the Framework

- Ensure decisions on commercial data acquisitions can be made with confidence

## Scope of the Framework

- Evaluation of commercial and other non-government EO missions in a consistent, standardized manner.
- Optical products - Covers Level-1 and Level-2, including TOA and Surface reflectance
- Includes joint ESA–NASA mission quality assessment guidelines (for optical, SAR, ...)

## Benefits

- Ensures consistent, defensible, transparent assessment across commercial vendors
- Provide Quality Assessment Reports to support science community's understanding of products
- Enables users to compare vendors in a common evaluation framework



# CSDA Program Highlights

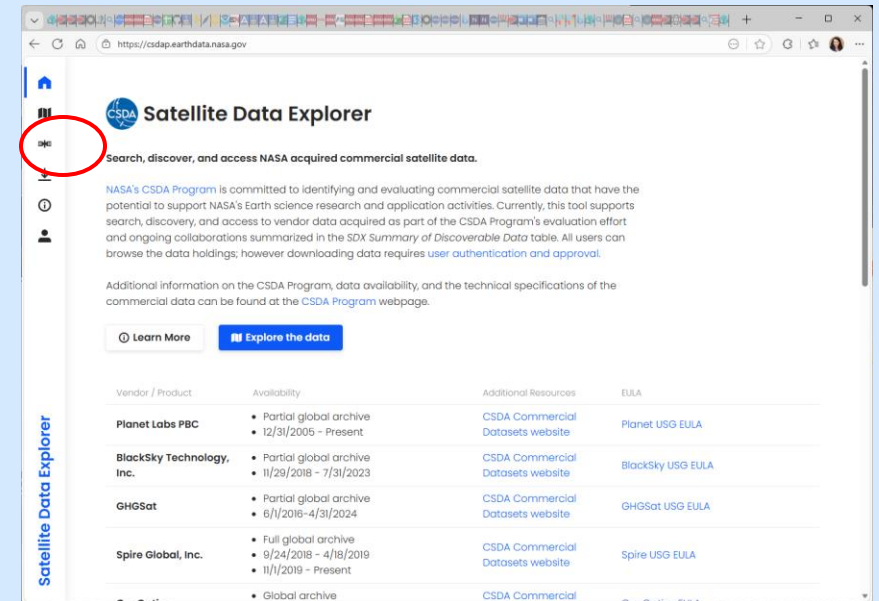
- All new business is on-ramped via Indefinite Delivery Indefinite Quantity (IDIQ) process. We are in the middle of a current on-ramp and will be bringing on new commercial partners early this calendar year.
- We're continuing to grow our collaborations with federal partners, as well as international partners.



## CSDA Data Acquisition Request System

A new dashboard that lets authorized users submit and track proposals for yet-to-be-collected data from CSDA's commercial partners.

The Data Acquisition Request System enables approved users to task — meaning request future data — from a CSDA commercial partner's satellite. Inquiries can also be made for commercial archived data not yet published in the SDX.

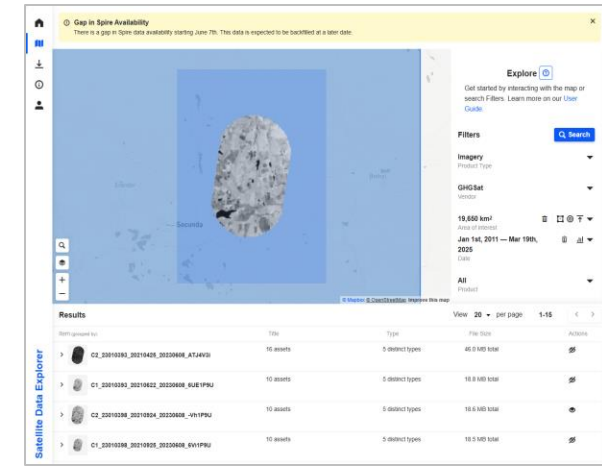
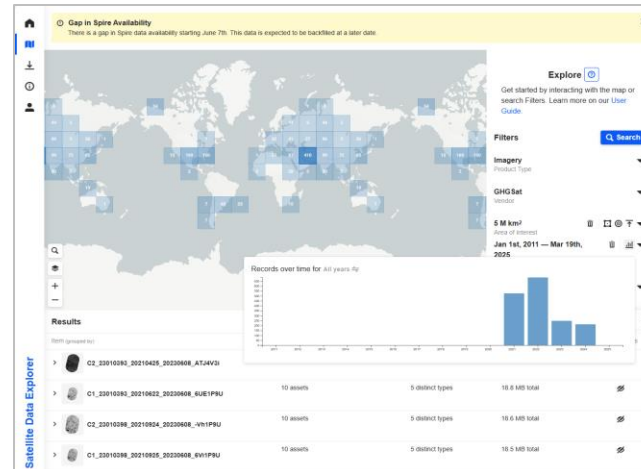


# Satellogic Contract and Data Access

- CSDA awarded Satellogic the IDIQ contract as part of our initial IDIQ On-Ramp 1 RFP solicitation in September 2024. A quality evaluation was conducted by NASA SMEs on the high-resolution imagery. The SME [Quality Assessment Report](#) is completed and is ready for public release.
  - ★ **Re-evaluation is expected this summer with an update to the evaluation report.**
- Data that was downloaded is in the process of being made available through the CSDA Satellite Data Explorer (SDX) interface and will be released with the reports.
- If you qualify for data access under our EULA, you can get authorization through the CSDA website: <https://csdap.earthdata.nasa.gov/signup>

**Satellite Data Explorer (SDX):**  
Web interface for central search, discovery, and distribution of CSDA data

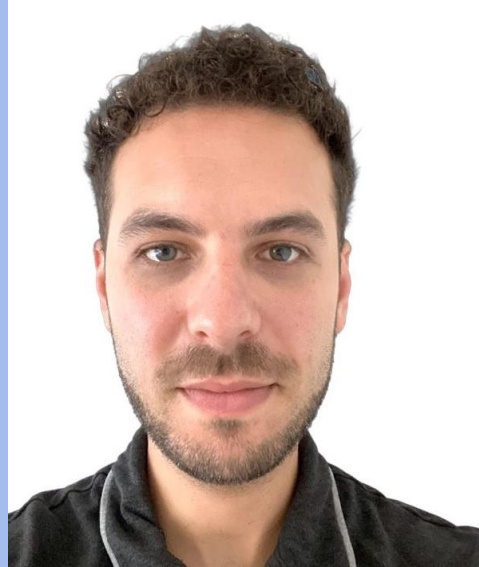
<https://csdap.earthdata.nasa.gov/>



# Speakers



**Mark Carmichael**  
VP of Sales, Imagery and  
Data | Satellogic



**Alan Grizek**  
Raw Imaging Team  
Manager | Satellogic



**Emma Douglas**  
Product Marketing  
Manager | Satellogic



**Taylor Struzik**  
Account Manager US  
Government | Satellogic